

FILE: PE-A-001st Floor Present day layout.DWG

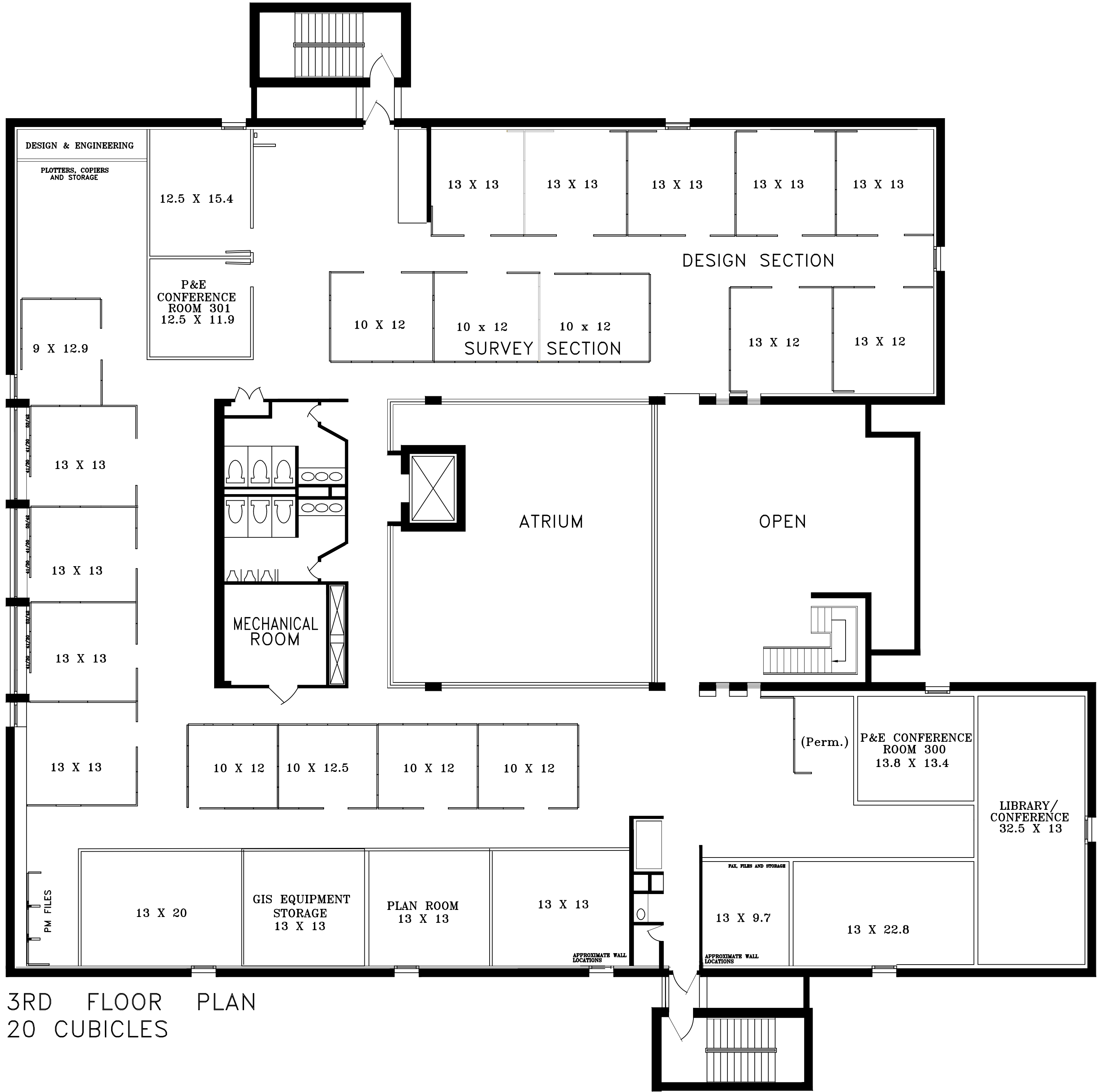
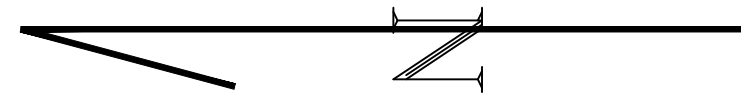
DATE: JULY 25, 2007

Scale: 1/8"=1'-0"

SHEET
3
OF 3

FAIRFAX WATER
MERRIFIELD OFFICE BUILDING
1ST FLOOR MODULAR OFFICE LAYOUT





3RD FLOOR PLAN
20 CUBICLES

FURNITURE NOTES

1. THIS PLAN IS FOR PERMIT PURPOSES ONLY. DIMENSIONS ARE INTENDED TO SHOW MINIMUM CLEARANCES. ALL FURNITURE, SPECIFICATIONS AND INSTALLATION BY OWNER.

Greenwell Goetz Architects, PC

1310 G Street, NW
Suite 600
Washington, DC
20005
202 682-0700
FAX 682-0738

CONSULTANT

**FAIRFAX COUNTY
WATER AUTHORITY**

**EXECUTIVE PARK AVE.
FAIRFAX, VA 22116**

PROJECT

NO	ISSUED FOR	DATE
12	FINAL SUBMISSION	6/18/97
11	100% SUBMISSION	5/19/97
10	75% REVIEW	4/21/97
9	ISSUED TO ENGINEERS	3/26/97
8	REVISED	2/27/97
7	REVISED	2/20/97
6	REVISED	1/3/96
5	REVISED	12/15/95
4	REVISED	11/21/95
3	REVISED	11/8/95
2	REVISED	11/1/95
1	CLIENT REVIEW	8/28/95

REGISTRATION

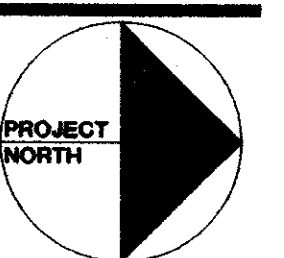
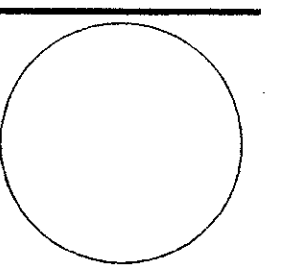
SIGNATURE

DATE 2-13-97

SCALE 1/8" = 1'-0"

DRAWN BY P11

APPROVED BY P11



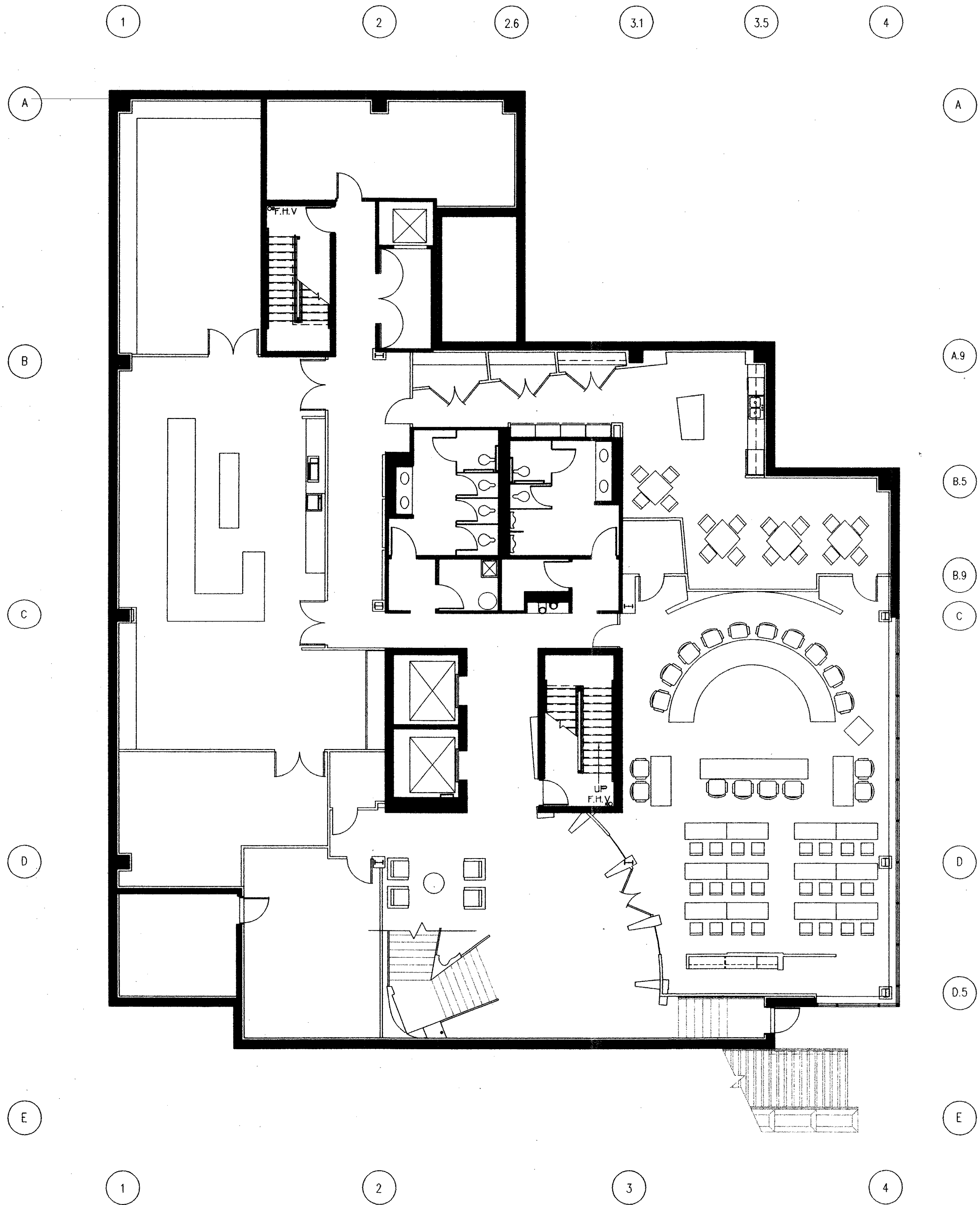
KEY PLAN

**BASEMENT FLOOR
FURNITURE PLAN**

SHEET TITLE

B- A8

SHEET NUMBER



**FAIRFAX COUNTY
WATER AUTHORITY**

**EXECUTIVE PARK AVE.
MERRIFIELD, VA 22116**

PROJECT

NO	ISSUED FOR	DATE
13	FINAL SUBMISSION	6/18/97
12	100% SUBMISSION	5/19/97
11	75% REVIEW	4/21/97
10	ISSUED TO ENGINEERS	3/26/97
9	REVISED	2/27/97
8	REVISED	2/20/97
7	REVISED	2/20/96
6	REVISED	1/3/96
5	REVISED	12/15/95
4	REVISED	11/21/95
3	REVISED	11/8/95
2	REVISED	11/1/95
1	CLIENT REVIEW	8/28/1995

REGISTRATION

SIGNATURE

DATE

SCALE

DRAWN BY

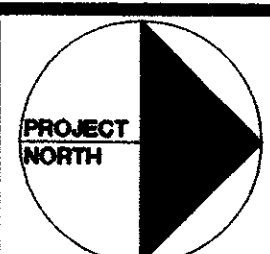
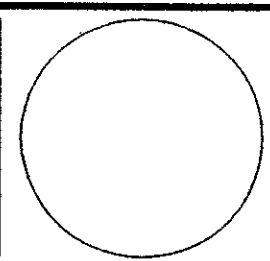
APPROVED BY

2-11-97

1/8" = 1'-0"

MM

MM



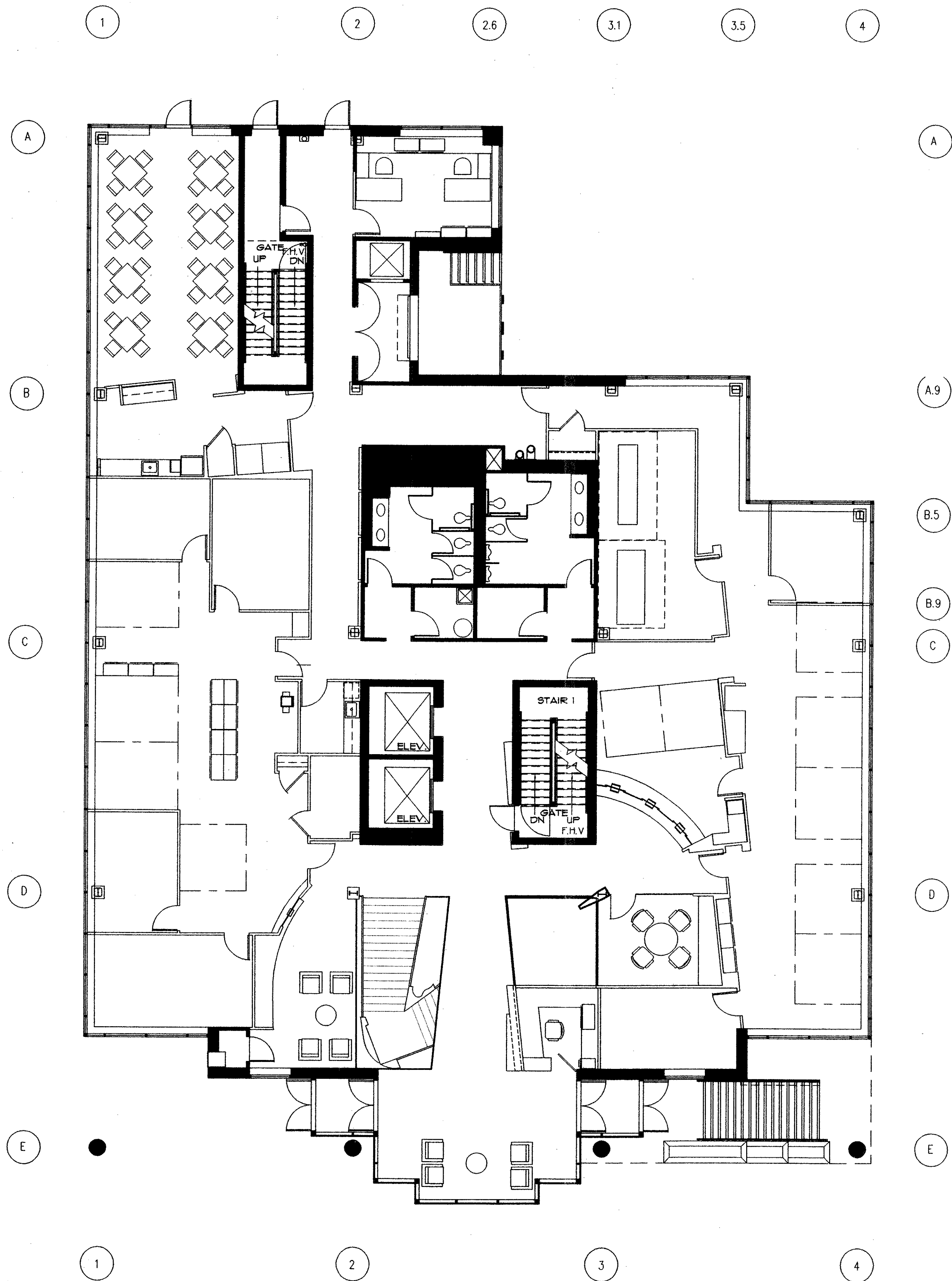
KEY PLAN

**FIRST FLOOR
FURNITURE PLAN**

SHEET TITLE

01- A8

SHEET NUMBER



**FAIRFAX COUNTY
WATER AUTHORITY**

**EXECUTIVE PARK AVE.
MERRIFIELD, VA 22116**

PROJECT

NO	ISSUED FOR	DATE
13.	FINAL SUBMISSION	6/18/97
12.	100% SUBMISSION	5/19/97
11.	75% REVIEW	4/21/97
10.	ISSUED TO ENGINEERS	3/26/97
9.	REVISED	2/27/97
8.	REVISED	2/20/97
7.	REVISED	1/22/96
6.	REVISED	1/3/96
5.	REVISED	12/14/95
4.	REVISED	11/21/95
3.	REVISED	11/8/95
2.	REVISED	11/1/95
1.	CLIENT REVIEW	8/28/1995

REGISTRATION

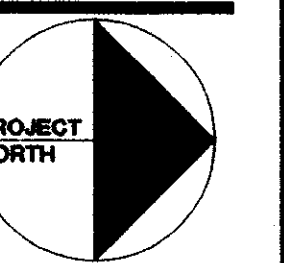
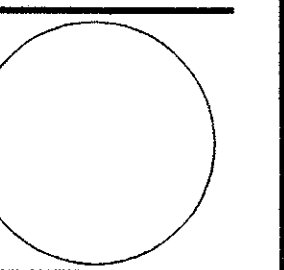
SIGNATURE

DATE 2-11-97

SCALE 1/8" = 1'-0"

DRAWN BY P11

APPROVED BY P11



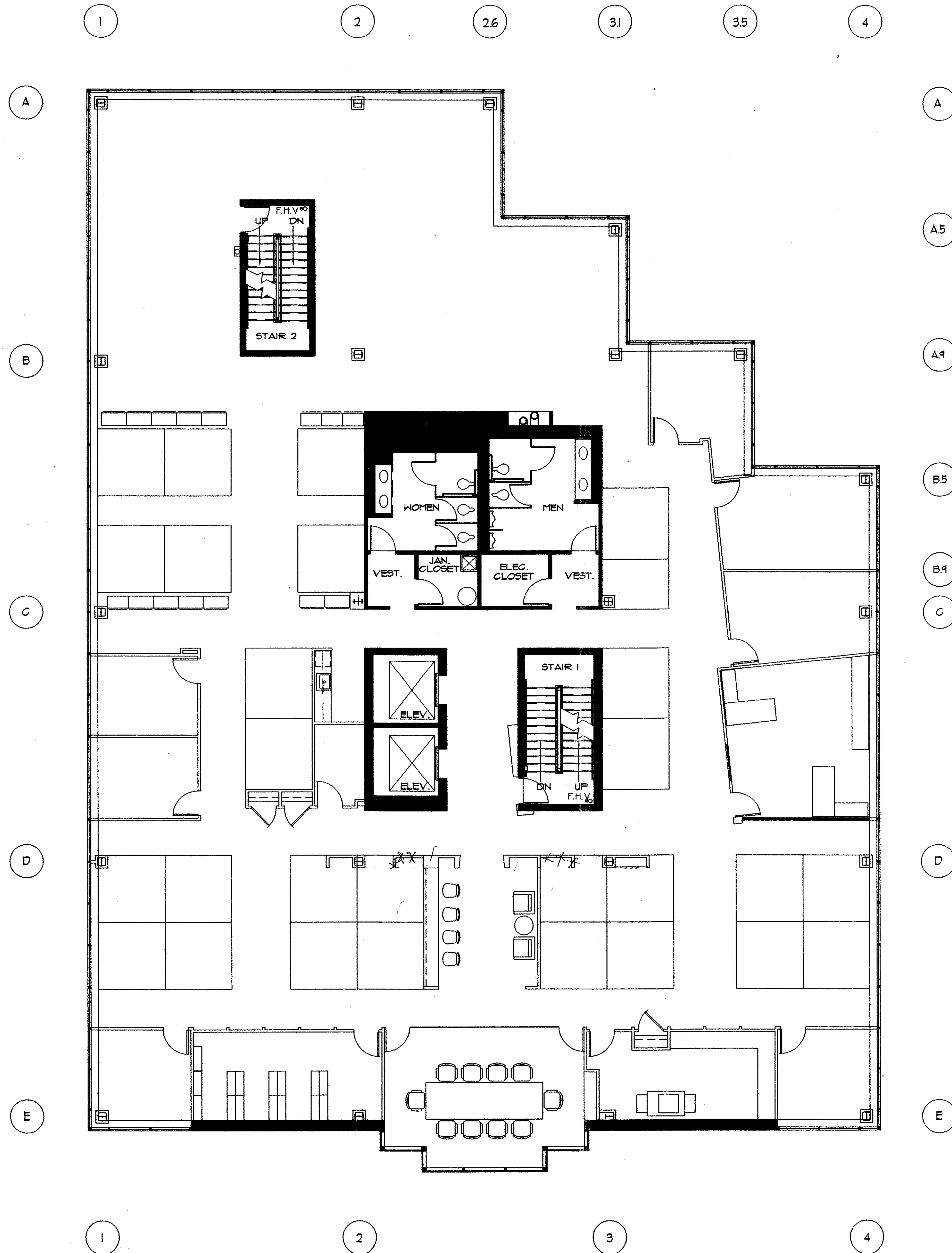
KEY PLAN

**SECOND FLOOR
FURNITURE PLAN**

SHEET TITLE

02-A8

SHEET NUMBER



**FAIRFAX COUNTY
 WATER AUTHORITY**

**EXECUTIVE PARK AVE.
 FAIRFAX, VA 22116**

PROJECT

NO	ISSUED FOR	DATE
13	FINAL SUBMISSION	6/18/97
12	100% SUBMISSION	5/14/97
11	75% REVIEW	4/21/97
10	ISSUED TO ENGINEERS	3/26/97
9	REVISED	2/27/97
8	REVISED	2/20/97
7	REVISED	1/22/96
6	REVISED	1/3/96
5	REVISED	12/15/95
4	REVISED	11/21/95
3	REVISED	11/8/95
15	REVISED PLAN ISSUED FOR PERMIT/CONSTRUCTION	9/26/97
14	3rd Floor Redesign	9/16/97

REGISTRATION

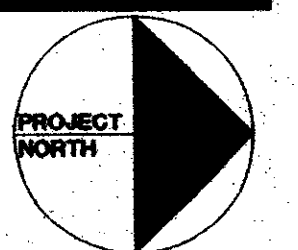
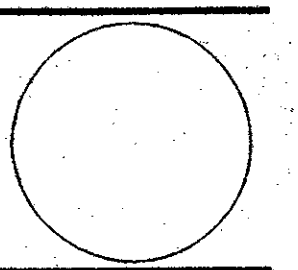
SIGNATURE

DATE 2-11-97

SCALE 1/8" = 1'-0"

DRAWN BY M1

APPROVED BY M1



Revised 9/29/97

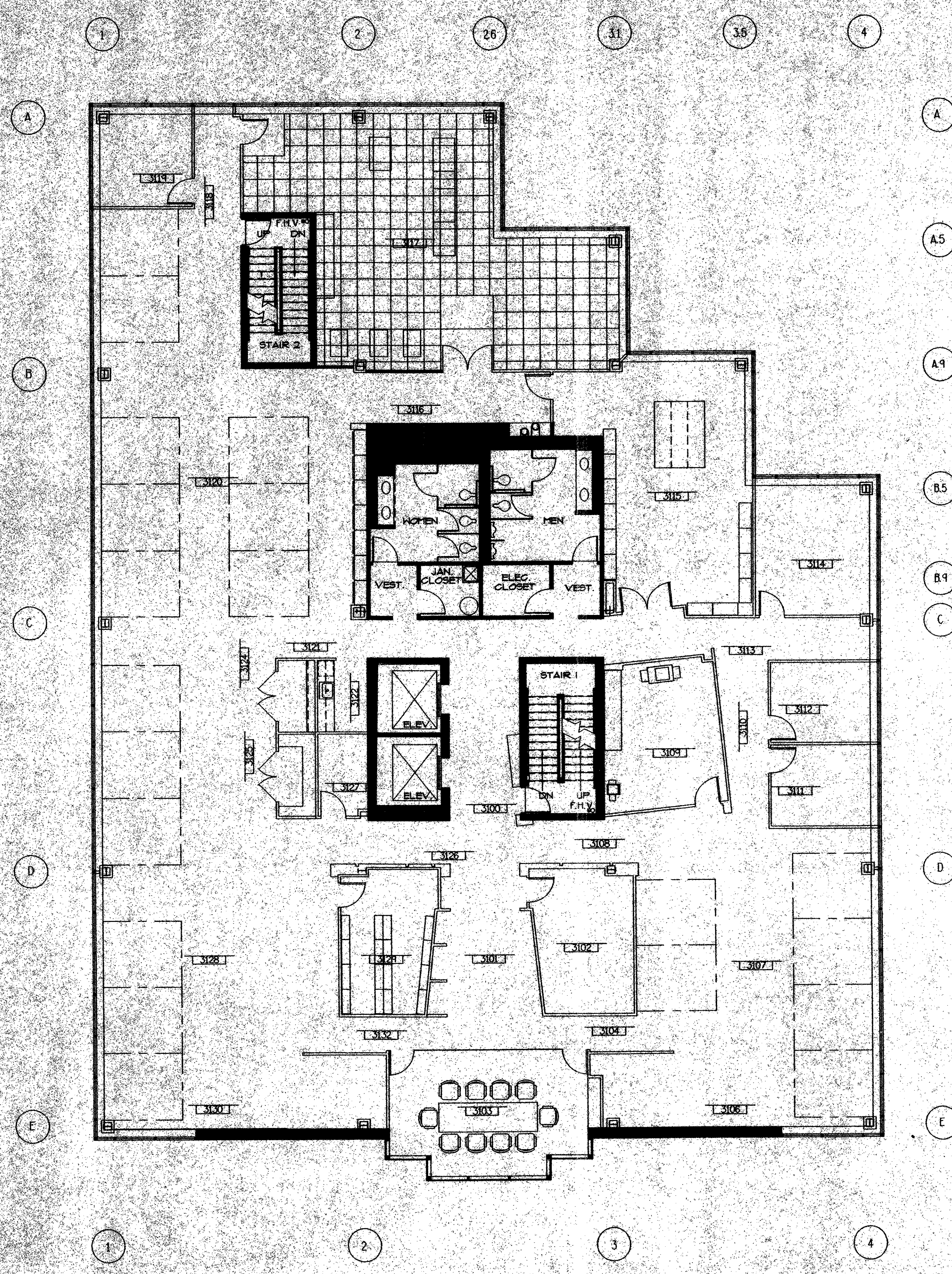
KEY PLAN

**THIRD FLOOR
 FURNITURE PLAN**

SHEET TITLE

03-A8

SHEET NUMBER



**FAIRFAX COUNTY
WATER AUTHORITY**

**EXECUTIVE PARK AVE.
FAIRFAX, VA 22116**

PROJECT

NO	ISSUED FOR	DATE
13.	FINAL SUBMISSION	6/18/97
12.	100% SUBMISSION	5/19/97
11.	75% REVIEW	4/21/97
10.	ISSUED TO ENGINEERS	3/26/97
9.	REVISED	2/27/97
8.	REVISED	2/22/97
7.	REVISED	1/22/96
6.	REVISED	1/3/96
5.	REVISED	12/15/95
4.	REVISED	11/21/95
3.	REVISED	11/8/95
2.	REVISED	11/1/95
1.	CLIENT REVIEW	8/28/1995

REGISTRATION

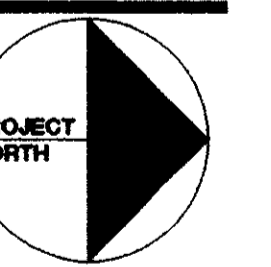
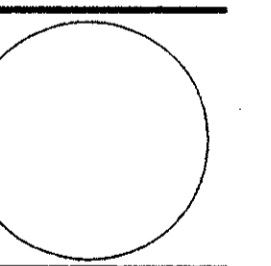
SIGNATURE

DATE 2-12-97

SCALE 1/8" = 1'-0"

DRAWN BY MFM

APPROVED BY MFM



KEY PLAN

**FOURTH FLOOR
FURNITURE PLAN**

SHEET TITLE

04-A8

SHEET NUMBER

