



FAIRFAX, VIRGINIA

**PROJECT 2377, DIVISION 004
36-INCH PRINCE WILLIAM COUNTY
TRANSMISSION MAIN, PHASE II
INVITATION FOR BIDS NO. 21-004**

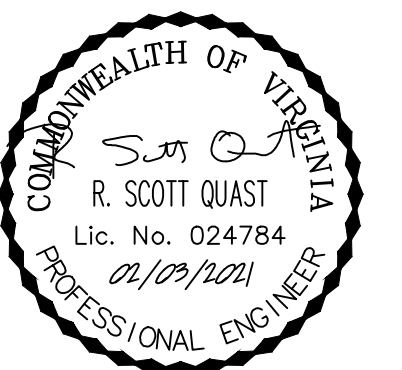
TAX MAP NOS. 112-2, 106-4

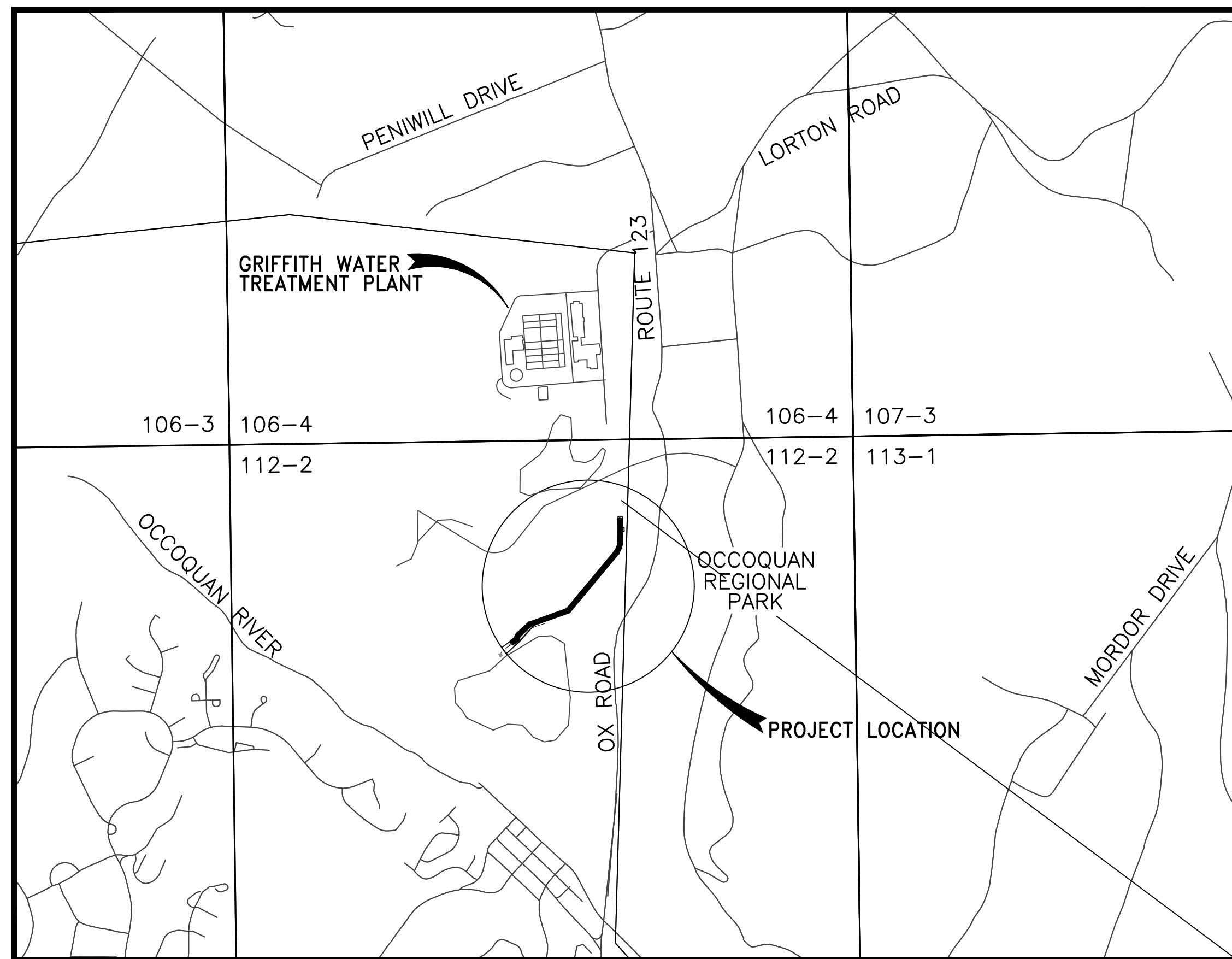
PREPARED BY:

Michael Baker
INTERNATIONAL

**MICHAEL BAKER INTERNATIONAL
10611 BALLS FORD ROAD, SUITE 140
MANASSAS, VA 20109**

FEBRUARY 2021





LOCATION MAP
SCALE: 1" = 1000'

INDEX

SHEET	TITLE
①	Location Map, Legend & General Notes
②	General Survey Control
③	Sequence of Construction & Abandonment Plan
④	Plan & Profile - 36" Water Main - Sta. 0+00 to 6+00
⑤	Plan & Profile - 36" Water Main - Sta. 6+00 to 12+00
⑥	Plan & Profile - 36" Water Main - Sta. 12+00 to 17+07
⑦	48" & 36" Interconnection Detail
⑧	Sta. 0+00 Tie-in Blow-Up Detail
⑨	Miscellaneous Details
⑩	Erosion & Sediment Control Notes & Details

SURVEY ABBREVIATIONS

EX.	Existing
C.A.	Ex. Concrete Apron
CONC.	Ex. Concrete
EP	Ex. Edge of Pavement
C&G	Ex. Curb and Gutter
HC	Ex. Header Curb
A.S.W.	Ex. Asphalt Sidewalk
C.S.W.	Ex. Concrete Sidewalk
B.S.W.	Ex. Brick Sidewalk
H.C.R.	Ex. Handicap Ramp
VEB	Ex. VDOT Electric Box
TSB	Ex. VDOT Traffic Signal Box
VTB	Ex. VDOT Traffic Box
TSB	Ex. Utility Handhole
VTB	Ex. Mulched Landscape Area

LEGEND

EXISTING STRUCTURES & FEATURES	PROPOSED STRUCTURES
— E — Underground Electric	— Proposed Water Main
— T — Underground Telephone	⊗ Valve
— FO — Underground Fiber Optic	— LC — LC — Limits of Construction
— UNK — Unknown Utility	
— # W # — Water Main Previously Abandoned	
▭ Ex. Asphalt Pavement	
▭ Ex. Concrete Pavement	
▭ Ex. Cement-Treated Aggregate (CTA) Surface	
▭ Ex. Gravel	
▭ Ex. Rip-Rap	
○ Indicates IPF	
• Post	
☒ Mail Box	
▲ Sign	
⊙ Water Valve Box	
⊞ Water Meter	
⊕ Fire Hydrant	
⊗ Water Valve	
— Guy Wire	
⊙ Gas Valve	
⊙ Utility Pole	
⊙ Bush	
— Woods Line	
— W — Water Main	
▭ Water Main (Large Diameter)	
— G — Natural Gas Line	
— Sanitary Sewer Line	
— Property Line/ R/W	
— Ex. Storm Sewer	
— Overhead Utilities	
— Ex. FCWA Easement	
— E — Underground Electric	
— COMM — Communications Cables	
— SFM — Septic Line	
— Ex. Ruts/Swales	
⊞ TH #X Test Hole	

RESTORATION NOTES

- Upon completion of water main installation, contractor shall remove the top 4 inches of mixed gravel material within the construction limits, between Station (-1+00) and approximately Sta. 4+00, and replace with 4 inches top soil and seeding. Jute mesh shall be used to stabilize the soil for growth in this area (assume construction limits 500' long x 100' wide). See Protective Covering Detail, Sheet 10.
- Contractor shall install temporary cross-vanes, using Class I Rip-Rap, at approximate Sta. 1+50 and 2+50. Cross-vanes shall be removed once seeding restoration is complete and growth established.
- From approximately Sta. 4+00 through the tie-in at Sta. 17+07, contractor shall restore the trench using VDOT 21A Stone and 6 inches VDOT Cement-Treated Aggregate (CTA), in accordance with the Trench Detail on Sheet 9.
- Contractor shall dispose of top 4 inches of removed material from Sta. (-1+00) to Sta. 4+00 (assume 100' wide) within the existing swales and ruts within this area. Contractor may also dispose of excess excavated spoils from pipeline trench within the swales and ruts along same area. The contractor shall compact the spoils within the swales and ruts to minimize future settlement in these areas.

GENERAL NOTES

- Working Pressure for Project 2377 Division 004 shall be between 55 psi and 70 psi during normal operating conditions. Working pressure will reach as high as 90 psi during certain operational scenarios.
- The Contractor shall contact the following persons in writing 14 days prior to start of construction in close proximity to the following areas/facilities:
Dominion Virginia Power - Robert Terry (571) 203-5243
Verizon - James Michael Haley (703) 369-9566
Vulcan - Erik Duly (804) 221-8367
- Contacts for other utilities in the area:
Cox - Jeff Acierio (703) 480-7812
Washington Gas - Stephen Lincoln (703) 750-4739
- Contractor shall conform to Virginia State Board of Health regulations (Part III Manual of Practice for Waterworks Design) Article 6, Section 12 VAC 5-590-1150, when crossing under all sanitary sewer lines.
- Survey information is based on the 1983 VCS for horizontal datum, and the NAVD 1988 for vertical control. Survey was provided by Vulcan Materials in 2016 and supplemental survey was provided by Rinker Design Associates dated June 26, 2020.
- All stationing and distances shown in the plans are based on horizontal measurements.
- Existing utilities, pipelines, and structures shown on the drawings are in accordance with available records. The contractor shall notify Miss Utility in accordance with Section 01500 of the Project Manual. The contractor shall verify the exact location, size, type, and elevation of all existing pipelines and structures, prior to pipeline excavation. Unmarked government utility lines may exist within project limits. Contractor to be responsible for any encountered at no additional cost to Fairfax Water.
- These plans show a proposed top and bottom of pipeline, separation at utility crossings, and pipeline cover requirement based on the use of ductile iron pipe for the new water mains. All conflicts between elevation and cover requirements shall be immediately brought to the attention of Fairfax Water's Engineer.
- Where it is necessary to deflect the pipe to the maximum allowable deflection, deflection shall be in accordance with Section 02510 of the Project Manual.
- The proposed pipeline shall be installed with four feet of earth cover in all locations, except where otherwise shown or specified.
- The contractor shall be responsible for establishing and maintaining all lines and grades necessary for water main installation in accordance with Section 01720 of the Project Manual.
- Stations for appurtenances shown on the plans are intended as a guide to show approximate locations. Valves and fittings may be shifted as directed by Fairfax Water or its Engineer to minimize field cuts. Adjusted stationing shall be shown on the as-built plans. Critical items as determined by Fairfax Water or its Engineer shall be installed to the exact position shown.
- No additional payment will be made for restraining valves for testing purposes not shown on plan as restrained.
- Contractor is responsible for obtaining site laydown areas. Contractor to obtain approval from property owners prior to using any property within construction limits for storage of materials, spoils, and/or equipment.
- All existing guard rails, fences, barricades, etc. removed to facilitate installation of the water main shall be reinstalled to their original(s) condition upon completion of construction, unless indicated otherwise in the plans. If any such structure is damaged as a result of construction activities, it shall be replaced by the contractor, at no additional cost to Fairfax Water.
- All Ductile Iron Pipe and fittings shall have an exterior zinc coating and Polyethylene Encasement (one layer V-Bio) as required in Section 02510 of the Specifications.
- Work Hours within the active roadway shall be allowed only between 5:00 P.M. and 5:00 A.M. Contractor shall not delay or impact any vehicle traffic along the roadway outside the Work Hours. The active roadway, utilized by Vulcan and by Virginia Paving, is located between approximately Sta. 4+00 and Sta. 17+07.
- All buried ductile iron pipe fittings shall be restrained using EBAA Iron Series 1100TDM Tandem Megalug Restraints or Approved Equal; or Foster Adaptors; or proprietary restrained joint fittings. All buried ductile iron pipe joints shall be restrained using proprietary restrained joint pipe only; no restraining gaskets shall be used for restraining pipe joints.



FAIRFAX WATER PLANNING & ENGINEERING DIVISION	DESIGNED: PA		
	DRAWN: SRB		
	CHECKED: RSQ		
		NO.	DATE

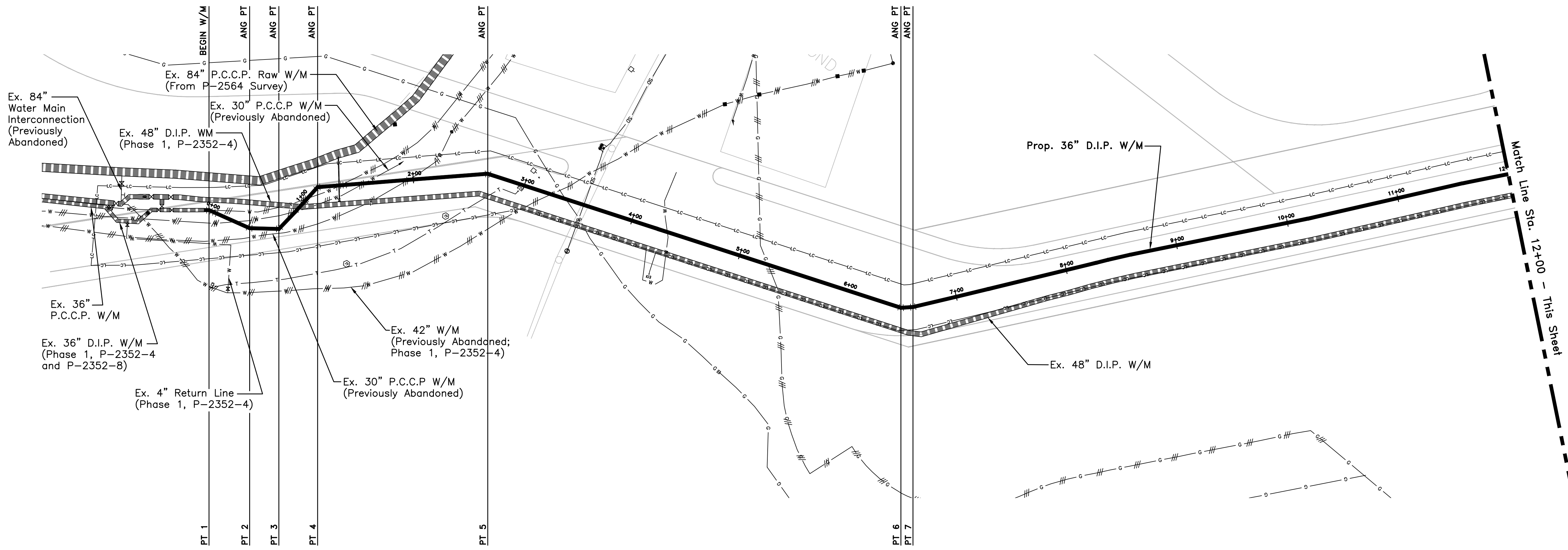
SCALE
AS NOTED

Michael Baker International
Michael Baker Intl., Inc.
A Unit of Michael Baker Corporation
10611 Balls Ford Road, Suite 140
Manassas, Virginia 20109
(703) 334-4915
Fax (703) 334-4914

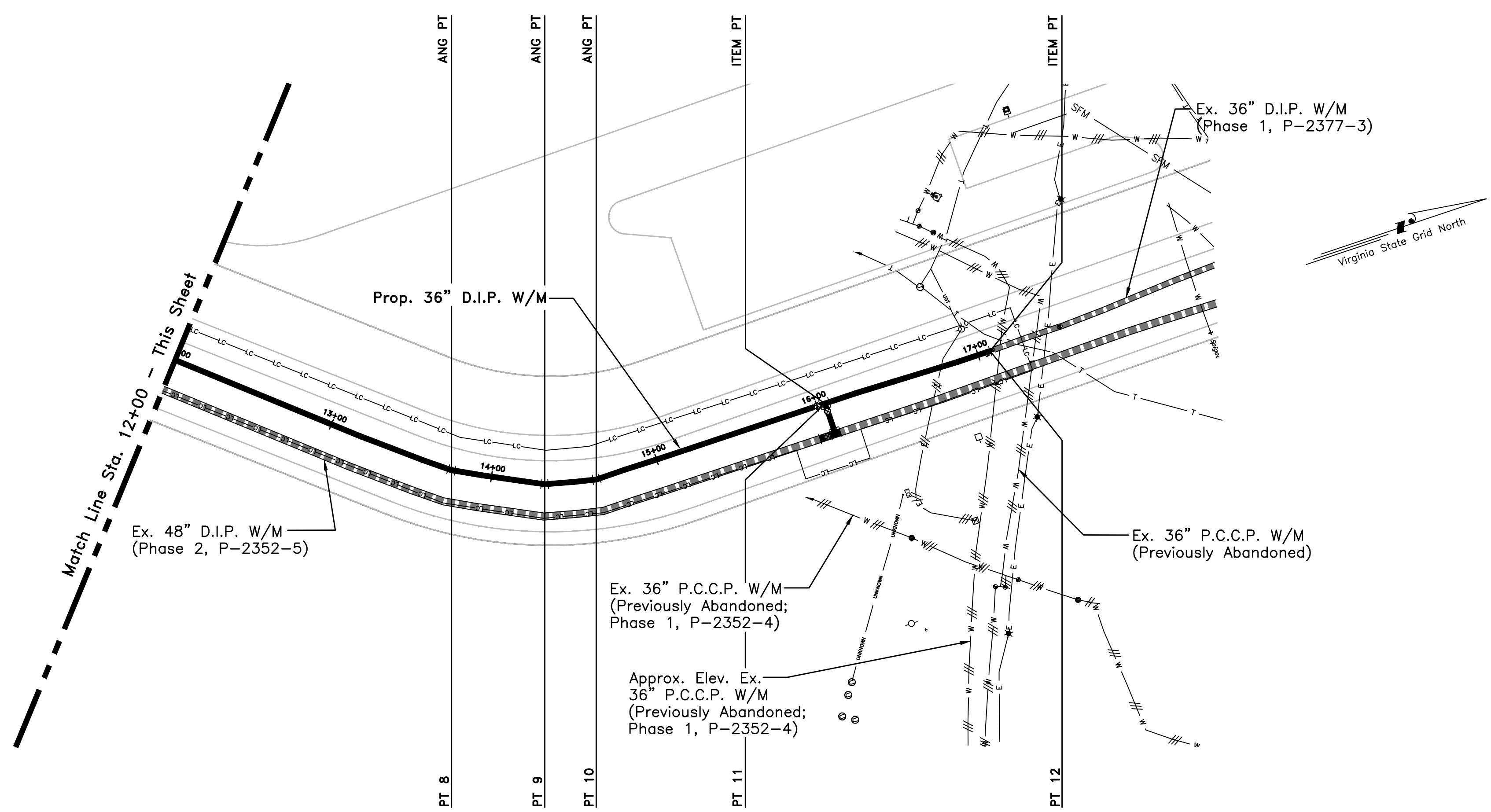
36-INCH PRINCE WILLIAM COUNTY
TRANSMISSION MAIN, PHASE II
LOCATION MAP, LEGEND & GENERAL NOTES

PROJECT	DIVISION	FEBRUARY 2021
2377	004	SHEET 1
TAX MAP	112-2	Of 10





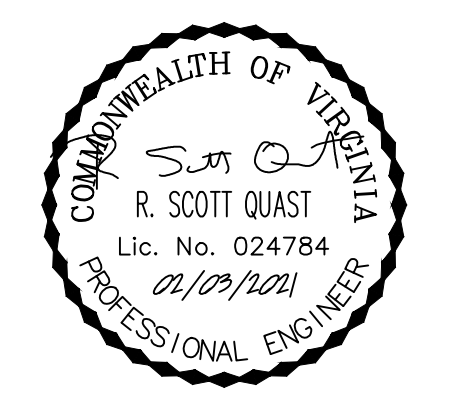
PROPOSED 36" WATER MAIN
Scale: 1"=50' Horiz.



PROPOSED 36" WATER MAIN
Scale: 1"=50' Horiz.

PROPOSED 36" WATER MAIN			
POINT NUMBER	WATER MAIN STATION	COORDINATE LISTING	
		NORTHING	EASTING
PT 1	0+00 22 1/2" BEND	6936454.32	11836496.27
PT 2	0+39 22 1/2" BEND	6936463.64	11836534.44
PT 3	0+65 45" BEND	6936478.92	11836555.33
PT 4	1+16 45" BEND	6936529.11	11836559.83
PT 5	2+66 22 1/2" BEND	6936630.42	11836671.58
PT 6	6+50 22 1/2" BEND	6936760.17	11837033.02
PT 7	6+61 11 1/4" BEND	6936767.21	11837041.04
PT 8	13+76 11 1/4" BEND	6937316.48	11837499.25
PT 9	14+32 11 1/4" BEND	6937366.11	11837524.65
PT 10	14+62 11 1/4" BEND	6937395.89	11837531.66
PT 11	16+05 TEE	6937538.43	11837531.97
PT 12	17+07 END 36" W/M	6937640.92	11837533.53

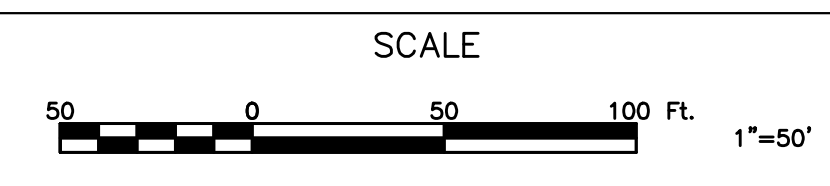
- NOTES:**
1. Stakeout information contained herein is intended as a guide to show horizontal design geometry for the water main alignment, as shown on the plans.
 2. The design and layout of materials to meet the service conditions and the criteria specified for this project are the responsibility of the Contractor. As part of Shop Drawing submittals, the Contractor shall submit Laying and Marking Schedules in accordance with Section 02510 of the specifications, abiding by all stated design criteria and allowable deflections.



FAIRFAX WATER
PLANNING & ENGINEERING
DIVISION

DESIGNED: PA
DRAWN: SRB
CHECKED: RSQ

NO.	DATE

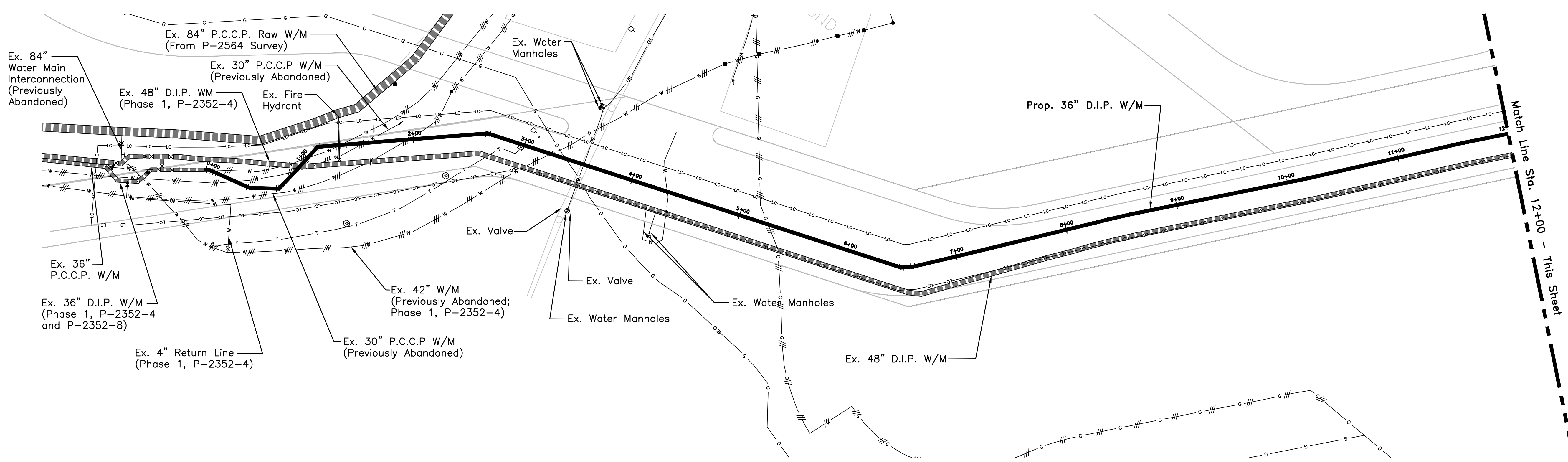


Michael Baker International
Michael Baker Intl., Inc.
A Unit of Michael Baker Corporation
10611 Balls Ford Road, Suite 140
Manassas, Virginia 20109
(703) 334-4915
Fax (703) 334-4914

36-INCH PRINCE WILLIAM COUNTY
TRANSMISSION MAIN, PHASE II
GENERAL SURVEY CONTROL

PROJECT	DIVISION	FEBRUARY 2021
2377	004	SHEET 2
TAX MAP 92-1, 92-2		Of 10





PROPOSED 36" WATER MAIN
Scale: 1"=50' Horiz.

GENERAL NOTES:

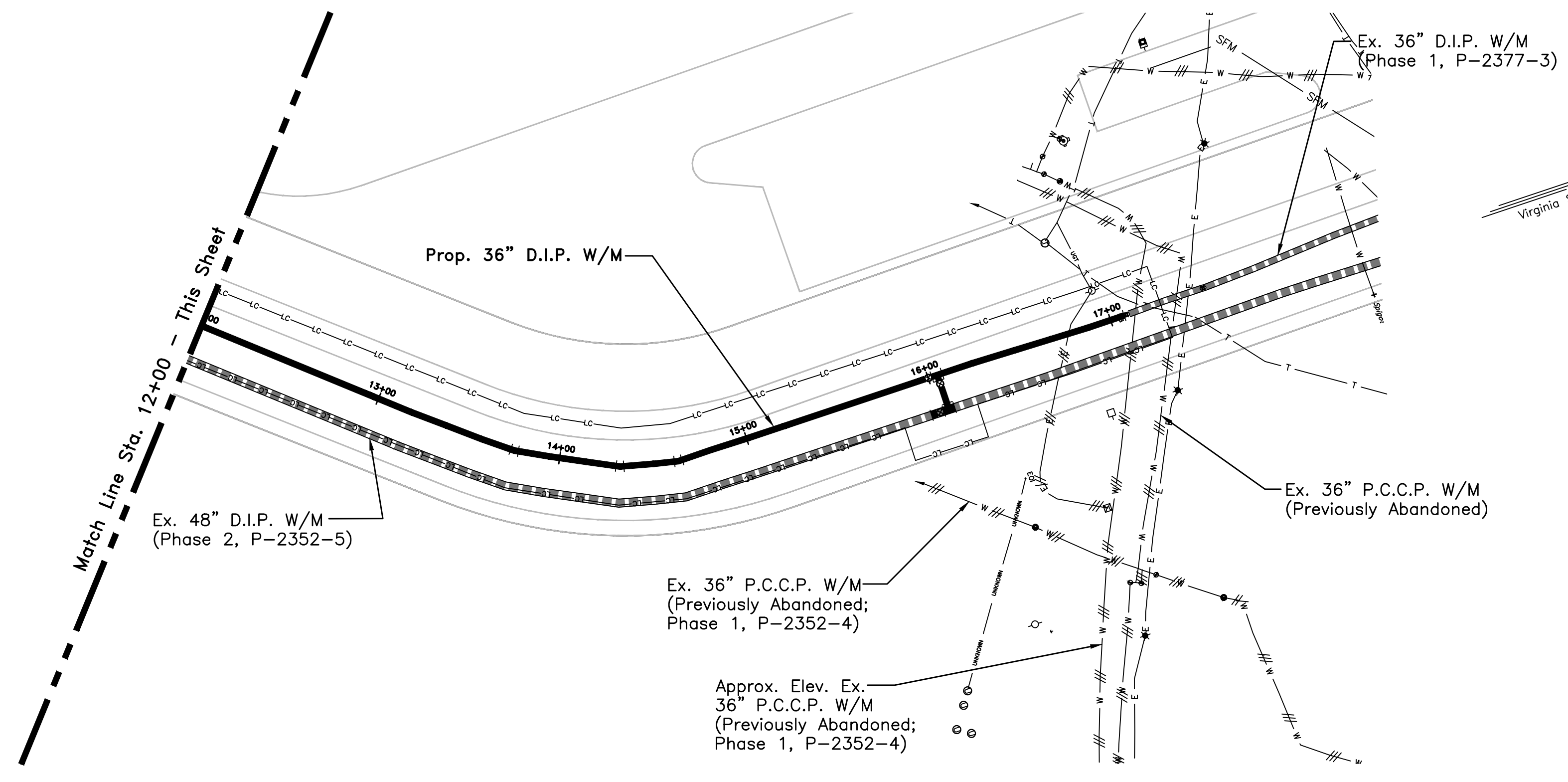
1. THIS SHEET COMPRISES A SUGGESTED SEQUENCE OF CONSTRUCTION PLAN, WHICH IS GENERAL IN NATURE, AND IS PROVIDED FOR INFORMATION PURPOSES ONLY. THIS PLAN REPRESENTS A SCHEMATIC OF THE EXISTING FAIRFAX WATER TRANSMISSION SYSTEM AND THE PROPOSED IMPROVEMENTS WITHIN THE LIMITS OF THIS PROJECT. IT IS INTENDED TO SHOW A GENERAL SCOPE OF THE PROPOSED WORK.
2. THE CONTRACTOR SHALL PROVIDE HIS OWN SEQUENCE OF CONSTRUCTION PLAN AND PROJECT SCHEDULE FOR REVIEW BY FAIRFAX WATER AND ITS ENGINEER IN ACCORDANCE WITH SECTION 01320 OF THE SPECIFICATIONS. THE CONTRACTOR SHALL BE RESPONSIBLE FOR PROVIDING THE NUMBER OF WORK CREWS AND EQUIPMENT NECESSARY TO COMPLETE THE PROPOSED WORK WITHIN THE CONTRACT TIME ALLOTTED. CONCURRENT PIPELINE OPERATIONS WILL BE PERMITTED PENDING FAIRFAX WATER'S AND ITS ENGINEER'S REVIEW AND APPROVAL OF THE CONTRACTOR'S PROJECT SCHEDULE.
3. THE CONTRACTOR SHALL COORDINATE ALL SHUTDOWNS AND INTERCONNECTIONS TO EXISTING WATER MAINS WITH REPRESENTATIVES OF FAIRFAX WATER. A WRITTEN SHUTDOWN PLAN SHALL BE PROVIDED BY CONTRACTOR FOR REVIEW BY FAIRFAX WATER 10 DAYS PRIOR TO SHUTDOWN. WHERE EXISTING WATER MAINS SHOWN ON THE PLANS ARE LABELED "TO BE ABANDONED OR REMOVED AS NECESSARY", THE CONTRACTOR SHALL ABANDON THE EXISTING MAIN PER FAIRFAX WATER SPECIFICATIONS, BUT SHALL REMOVE ONLY THE EXISTING PIPE AS NECESSARY, WHERE IT MAY CONFLICT WITH CONSTRUCTION OF PROPOSED WATER MAINS AND/OR ROADWAYS.
4. WORK HOURS WITHIN THE ACTIVE ROADWAY SHALL BE ALLOWED ONLY BETWEEN 5:00 P.M. AND 5:00 A.M. CONTRACTOR SHALL NOT DELAY OR IMPACT ANY VEHICLE TRAFFIC ALONG THE ROADWAY OUTSIDE THE WORK HOURS. THE ACTIVE ROADWAY, UTILIZED BY VULCAN AND BY VIRGINIA PAVING, IS LOCATED BETWEEN APPROXIMATELY STA. 4+00 AND STA. 17+07.

LEGEND

EXISTING WATER MAIN PREVIOUSLY ABANDONED

SEQUENCE OF CONSTRUCTION:

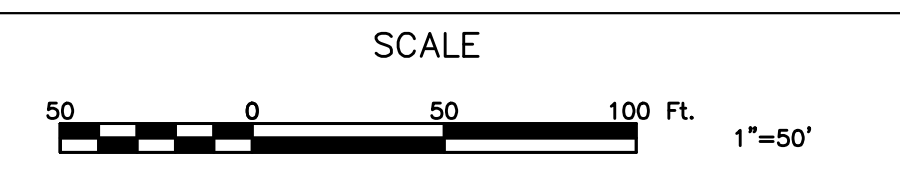
1. INSTALL PROPOSED 36" WATER MAIN AS FOLLOWS. THE 36" WATER MAIN MUST BE IN SERVICE PRIOR TO SHUTTING DOWN THE EXISTING 48" WATER MAIN FOR THE 48" & 36" INTERCONNECTION TIE-IN:
 - A. PROPOSED 36" WATER MAIN FROM APPROXIMATE STA. 0+00 TO 17+07, INCLUDING 36" BRANCH VALVE AT TEE AT STA. 16+05, AND INCLUDING ALL APPURTENANCES. INSTALL A TEMPORARY RESTRAINED 36" PLUG/CAP ON THE BRANCH VALVE, TO REMAIN IN PLACE UNTIL THE 48" & 36" INTERCONNECTION IS READY FOR TIE-IN.
 - B. CHLORINATE AND FLUSH EACH SECTION OF THE NEW WATER MAIN IN ACCORDANCE WITH THE SPECIFICATIONS AND THE CONTRACTOR'S APPROVED SCHEDULE.
 - C. UPON SUCCESSFUL COMPLETION OF PRESSURE TESTS AND WATER SAMPLE TESTS FOR THE NEW 36-INCH WATER MAIN, AND AFTER ACCEPTANCE AND APPROVAL BY FAIRFAX WATER TO PLACE THE SYSTEM INTO SERVICE, THE CONTRACTOR SHALL CONNECT TO EX. 36-INCH WATER MAIN AT STA. 0+00 AND STA. 17+07.
2. INSTALL PROPOSED 48" & 36" INTERCONNECTION AS FOLLOWS:
 - A. PROPOSED 48" & 36" INTERCONNECTION, INCLUDING ALL APPURTENANCES, UP TO THE CONNECTION POINTS.
 - B. CHLORINATE AND FLUSH EACH SECTION OF THE NEW WATER MAIN IN ACCORDANCE WITH THE SPECIFICATIONS AND THE CONTRACTOR'S APPROVED SCHEDULE.
 - C. UPON SUCCESSFUL COMPLETION OF PRESSURE TESTS AND WATER SAMPLE TESTS FOR THE NEW INTERCONNECTION WATER MAIN, AND AFTER ACCEPTANCE AND APPROVAL BY FAIRFAX WATER TO PLACE THE SYSTEM INTO SERVICE, THE CONTRACTOR SHALL CONNECT TO EX. 48" WATER MAIN.
3. INTERCONNECTION TO FAIRFAX WATER'S EXISTING TRANSMISSION MAINS WILL ONLY BE PERMITTED BETWEEN OCTOBER 15 AND APRIL 15, UNLESS OTHERWISE APPROVED.



PROPOSED 36" WATER MAIN
Scale: 1"=50' Horiz.

FAIRFAX WATER
PLANNING & ENGINEERING
DIVISION

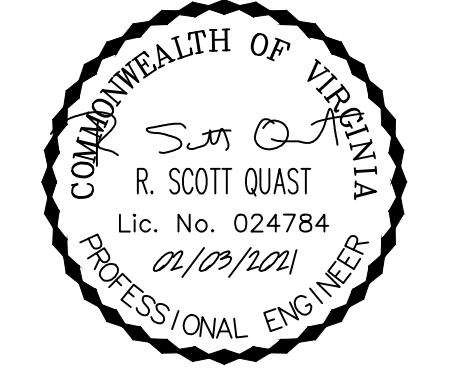
DESIGNED:	PA		
DRAWN:	SRB		
CHECKED:	RSQ		
		NO.	DATE

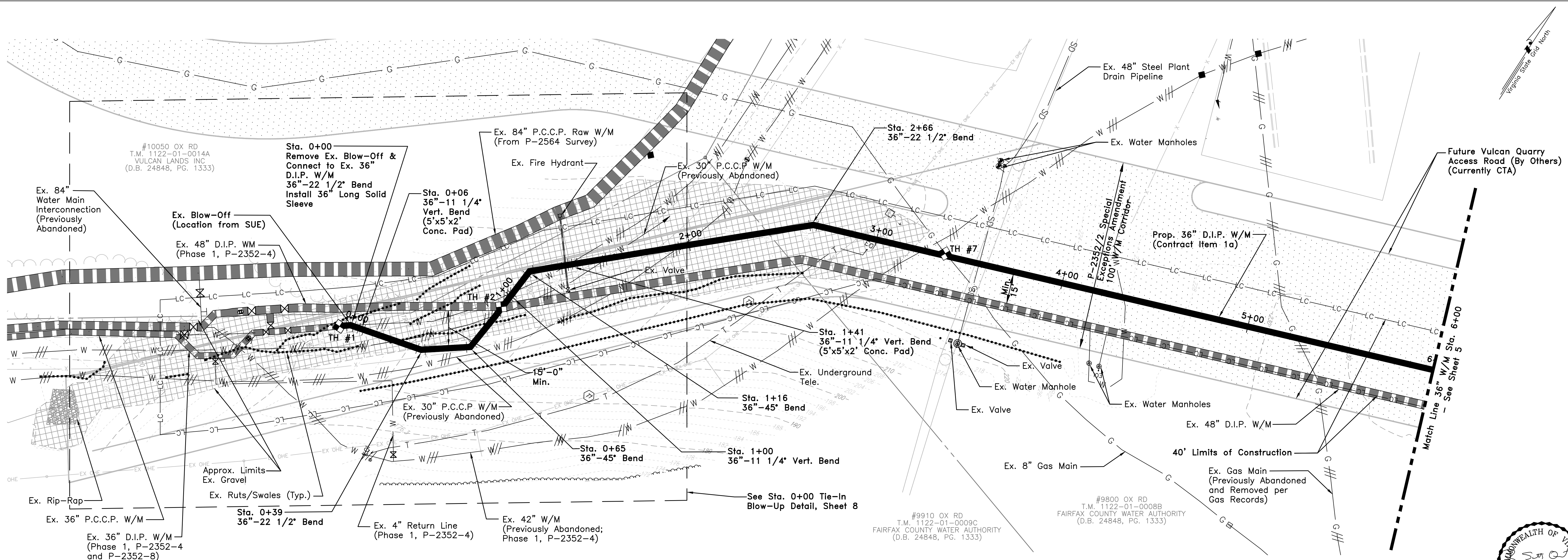


Michael Baker International
Michael Baker Intl., Inc.
A Unit of Michael Baker Corporation
10611 Balls Ford Road, Suite 140
Manassas, Virginia 20109
(703) 334-4915
Fax (703) 334-4914

36-INCH PRINCE WILLIAM COUNTY
TRANSMISSION MAIN, PHASE II
SEQUENCE OF CONSTRUCTION &
ABANDONMENT PLAN

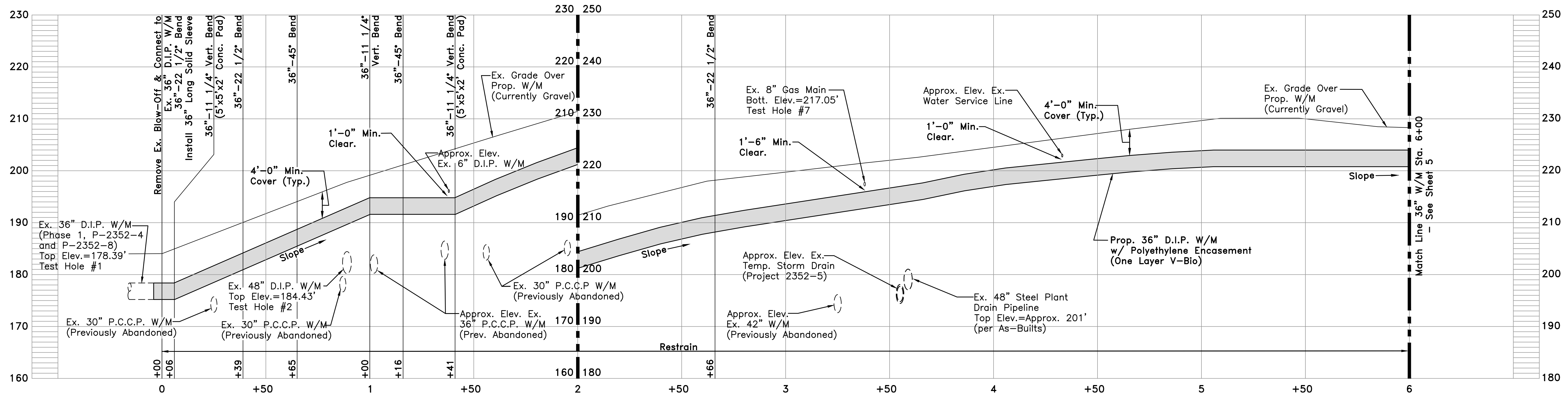
PROJECT	DIVISION	FEBRUARY 2021
2377	004	SHEET 3
TAX MAP	92-1, 92-2	Of 10





RESTORATION NOTES
SEE SHEET 1

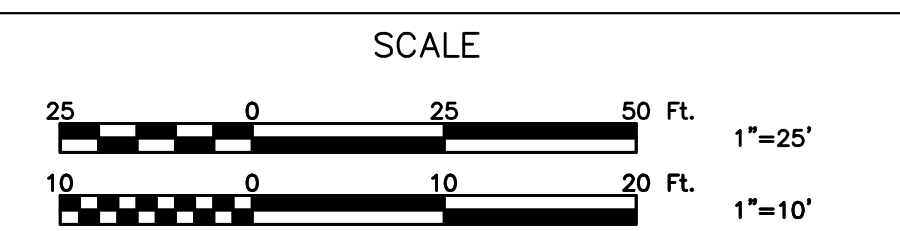
PLAN
Scale: 1"=25' Horiz.



PROFILE
Scale: 1"=25' Horiz.; 1"=10' Vert.

FAIRFAX WATER
PLANNING & ENGINEERING
DIVISION

DESIGNED:	PA
DRAWN:	SRB
CHECKED:	RSQ
NO.	DATE

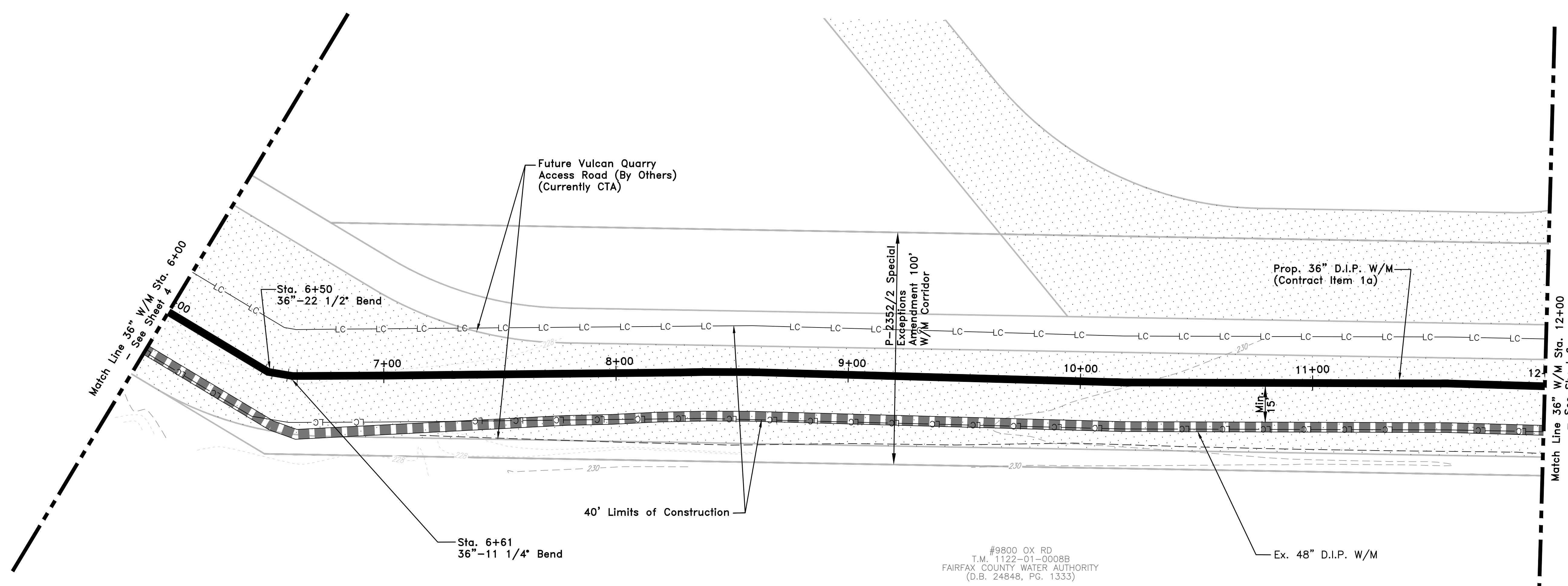
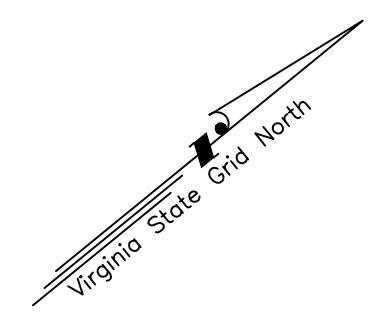


Michael Baker International
Michael Baker Intl., Inc.
A Unit of Michael Baker Corporation
10611 Balls Ford Road, Suite 140
Manassas, Virginia 20109
(703) 334-4915
Fax (703) 334-4914

**36-INCH PRINCE WILLIAM COUNTY
TRANSMISSION MAIN, PHASE II
36" WATER MAIN, PLAN & PROFILE
STA. 0+00 TO 6+00**

PROJECT	DIVISION	FEBRUARY 2021
2377	004	SHEET 4
TAX MAP	112-2	Of 10

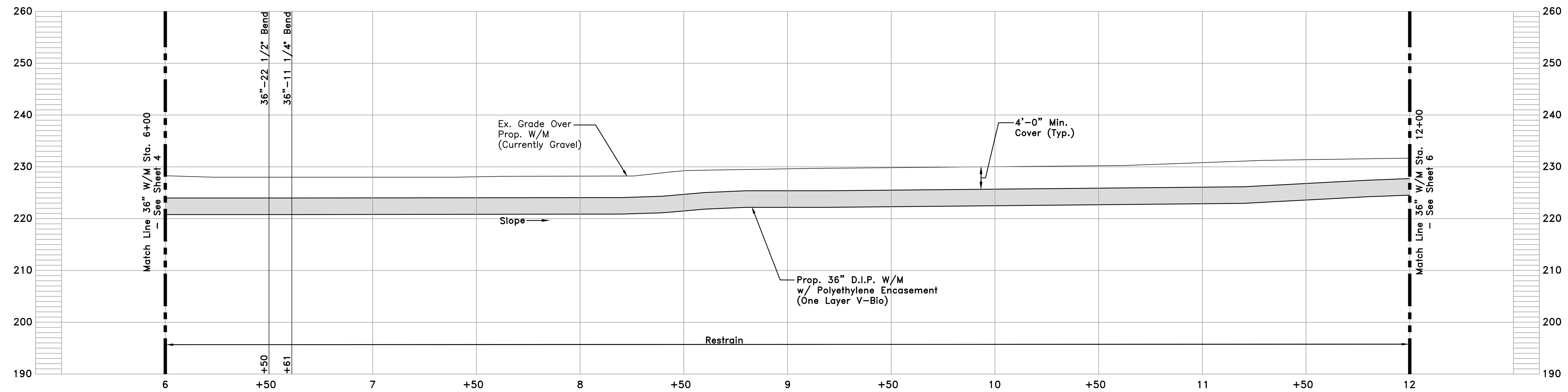




#9800 OX RD
T.M. 1122-01-0008B
FAIRFAX COUNTY WATER AUTHORITY
(D.B. 24848, PG. 1333)

RESTORATION NOTES
SEE SHEET 1

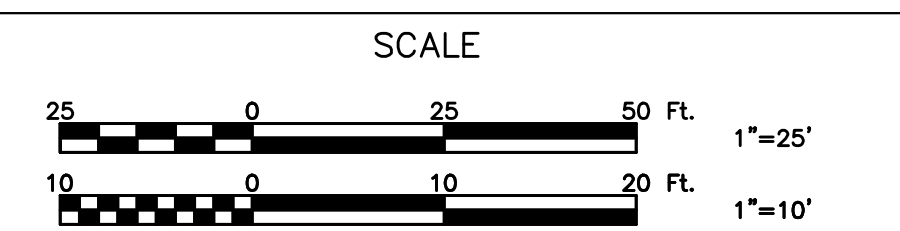
PLAN
Scale: 1"=25' Horiz.



PROFILE
Scale: 1"=25' Horiz.; 1"=10' Vert.

FAIRFAX WATER
PLANNING & ENGINEERING
DIVISION

DESIGNED:	PA		
DRAWN:	SRB		
CHECKED:	RSQ		
		NO.	DATE

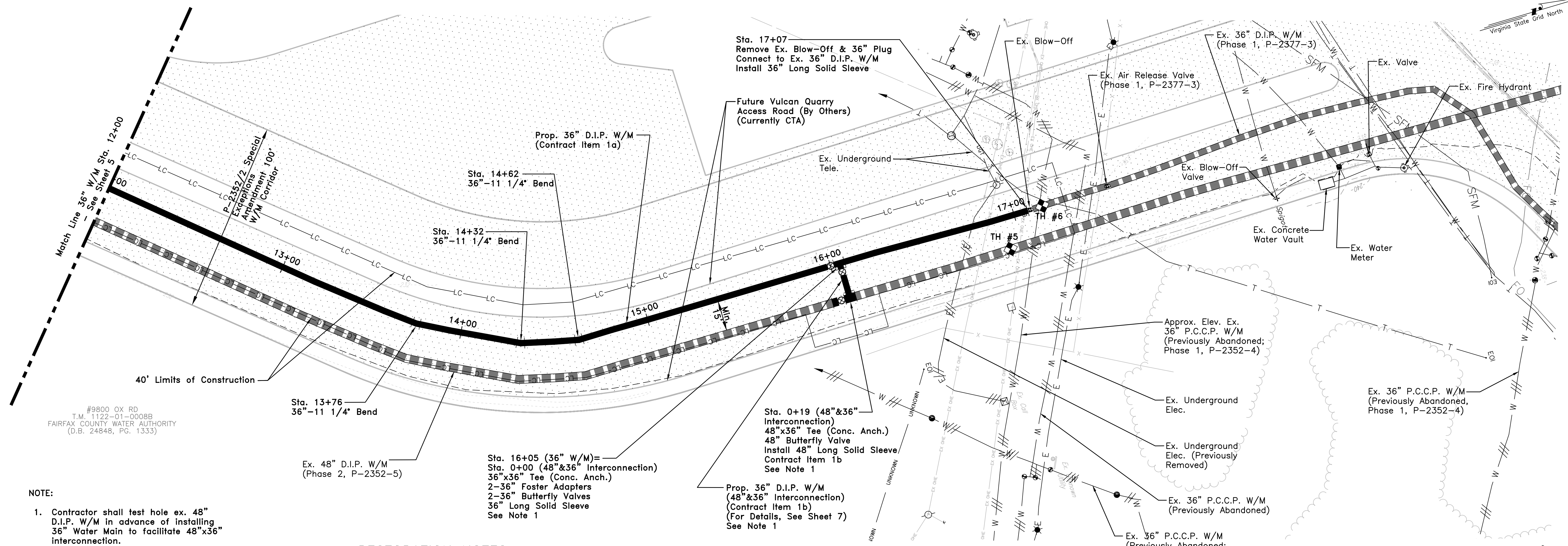


Michael Baker International
Michael Baker Intl., Inc.
A Unit of Michael Baker Corporation
10611 Balls Ford Road, Suite 140
Manassas, Virginia 20109
(703) 334-4915
Fax (703) 334-4914

**36-INCH PRINCE WILLIAM COUNTY
TRANSMISSION MAIN, PHASE II
36" WATER MAIN, PLAN & PROFILE
STA. 6+00 TO 12+00**

PROJECT	DIVISION	FEBRUARY 2021
2377	004	SHEET 5
TAX MAP	112-2	Of 10





#9800 OX RD
T.M. 1122-01-0008B
FAIRFAX COUNTY WATER AUTHORITY
(D.B. 24848, PG. 1333)

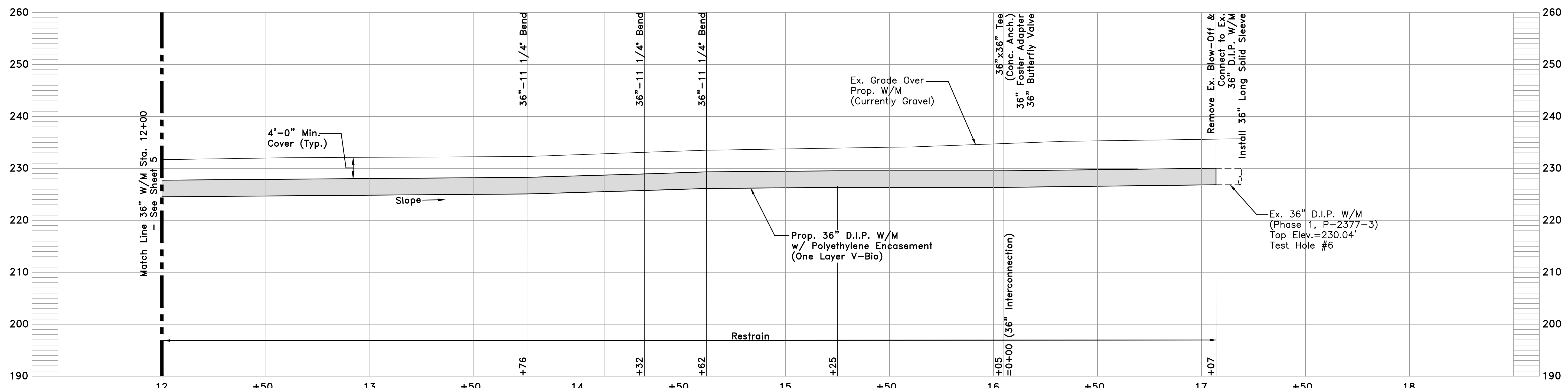
NOTE:
1. Contractor shall test hole ex. 48" D.I.P. W/M in advance of installing 36" Water Main to facilitate 48"x36" interconnection.

RESTORATION NOTES

SEE SHEET 1

PLAN

Scale: 1"=25' Horiz.



PROFILE

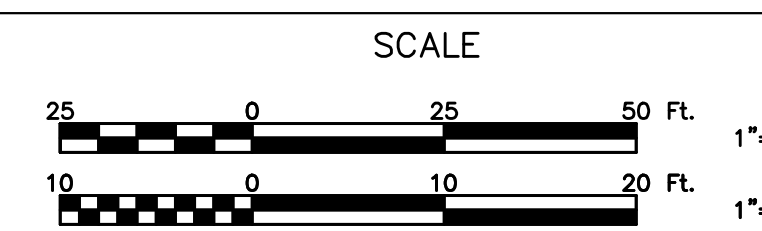
Scale: 1"=25' Horiz.; 1"=10' Vert.



FAIRFAX WATER
PLANNING & ENGINEERING
DIVISION

DESIGNED: PA
DRAWN: SRB
CHECKED: RSQ

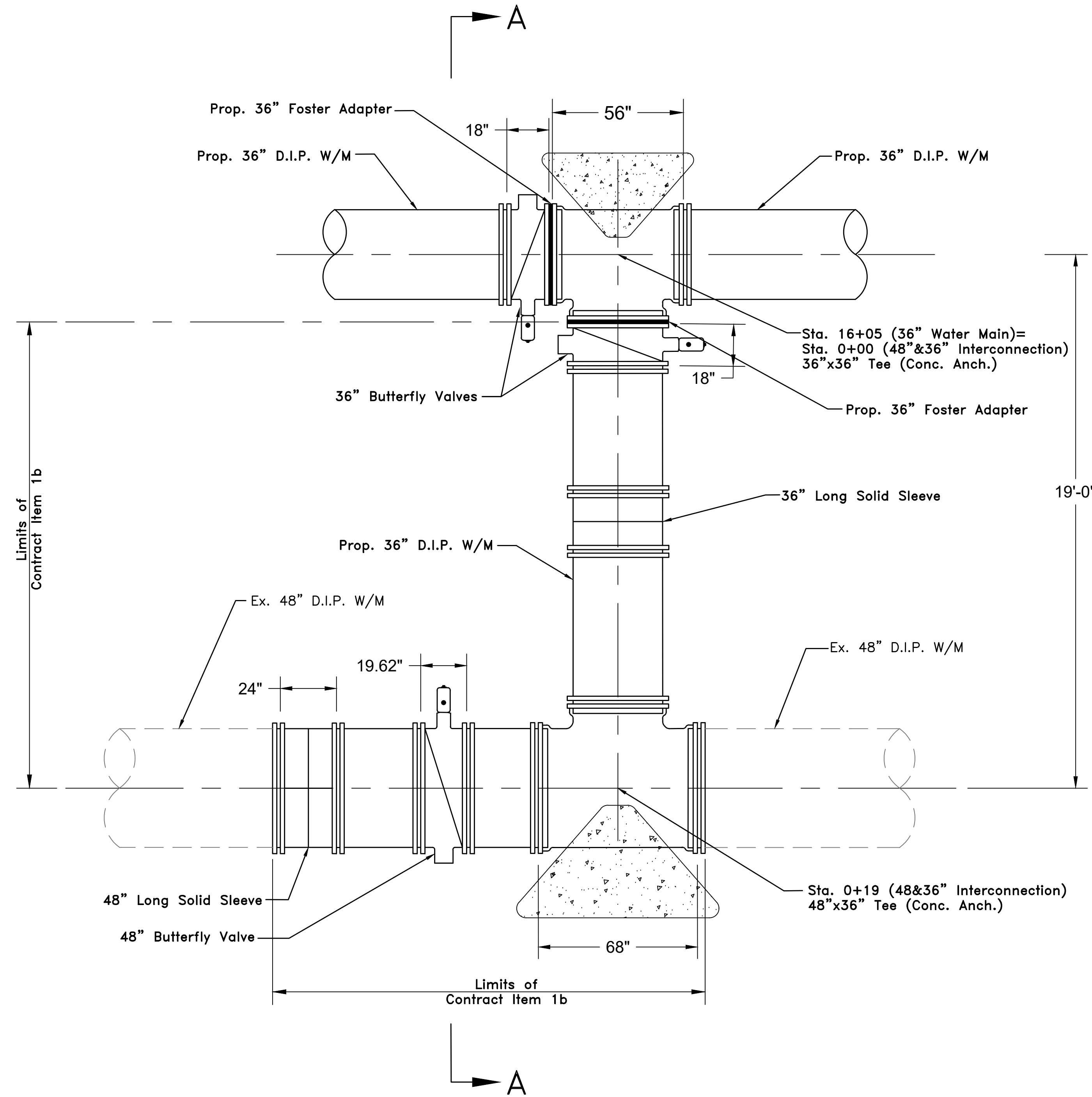
NO.	DATE



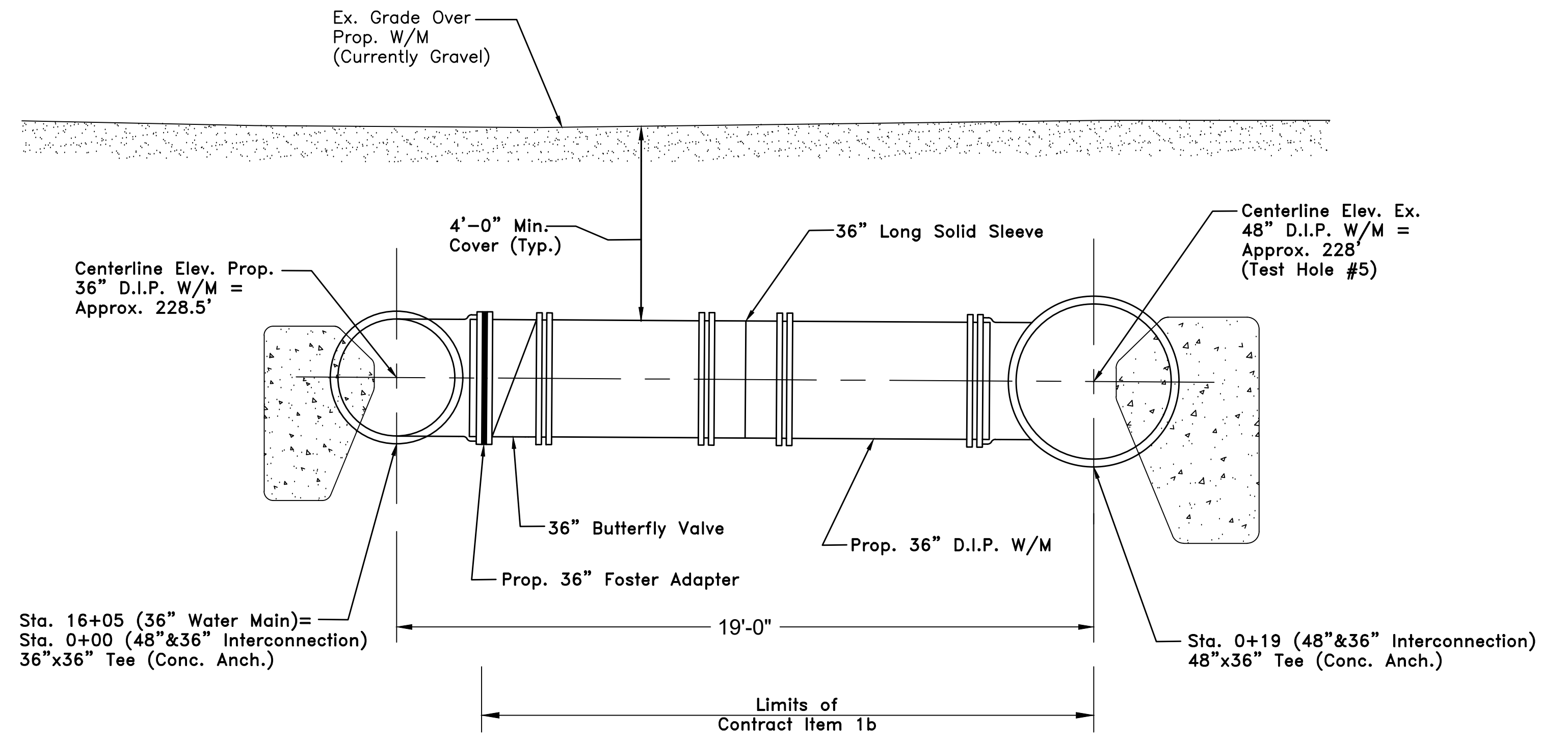
Michael Baker International
Michael Baker Intl., Inc.
A Unit of Michael Baker Corporation
10611 Balls Ford Road, Suite 140
Manassas, Virginia 20109
(703) 334-4915
Fax (703) 334-4914

36-INCH PRINCE WILLIAM COUNTY
TRANSMISSION MAIN, PHASE II
36" WATER MAIN, PLAN & PROFILE
STA. 12+00 TO 17+07

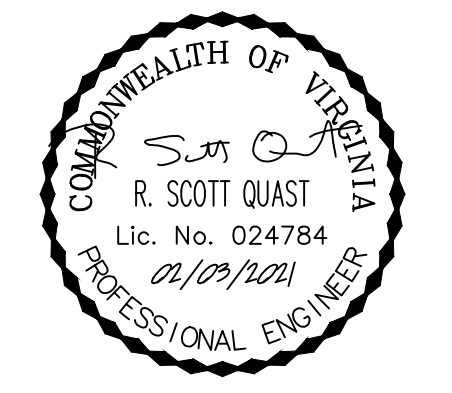
PROJECT	DIVISION	FEBRUARY 2021
2377	004	SHEET 6
TAX MAP	112-2	Of 10



48" & 36" INTERCONNECTION
 Scale: 3/8"=1'-0"
 (For Plan View, See Sheet 6)



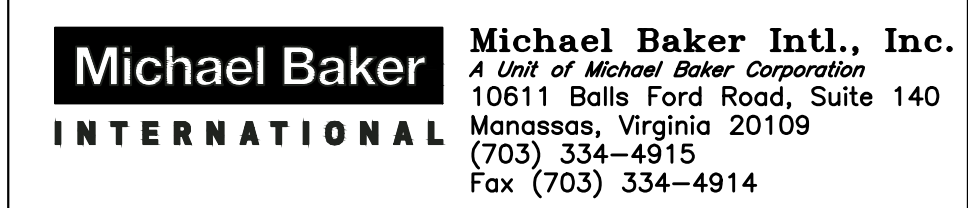
SECTION A-A
 Scale: 3/8"=1'-0"



FAIRFAX WATER
 PLANNING & ENGINEERING
 DIVISION

DESIGNED:	PA		
DRAWN:	SRB		
CHECKED:	RSQ		
		NO.	DATE

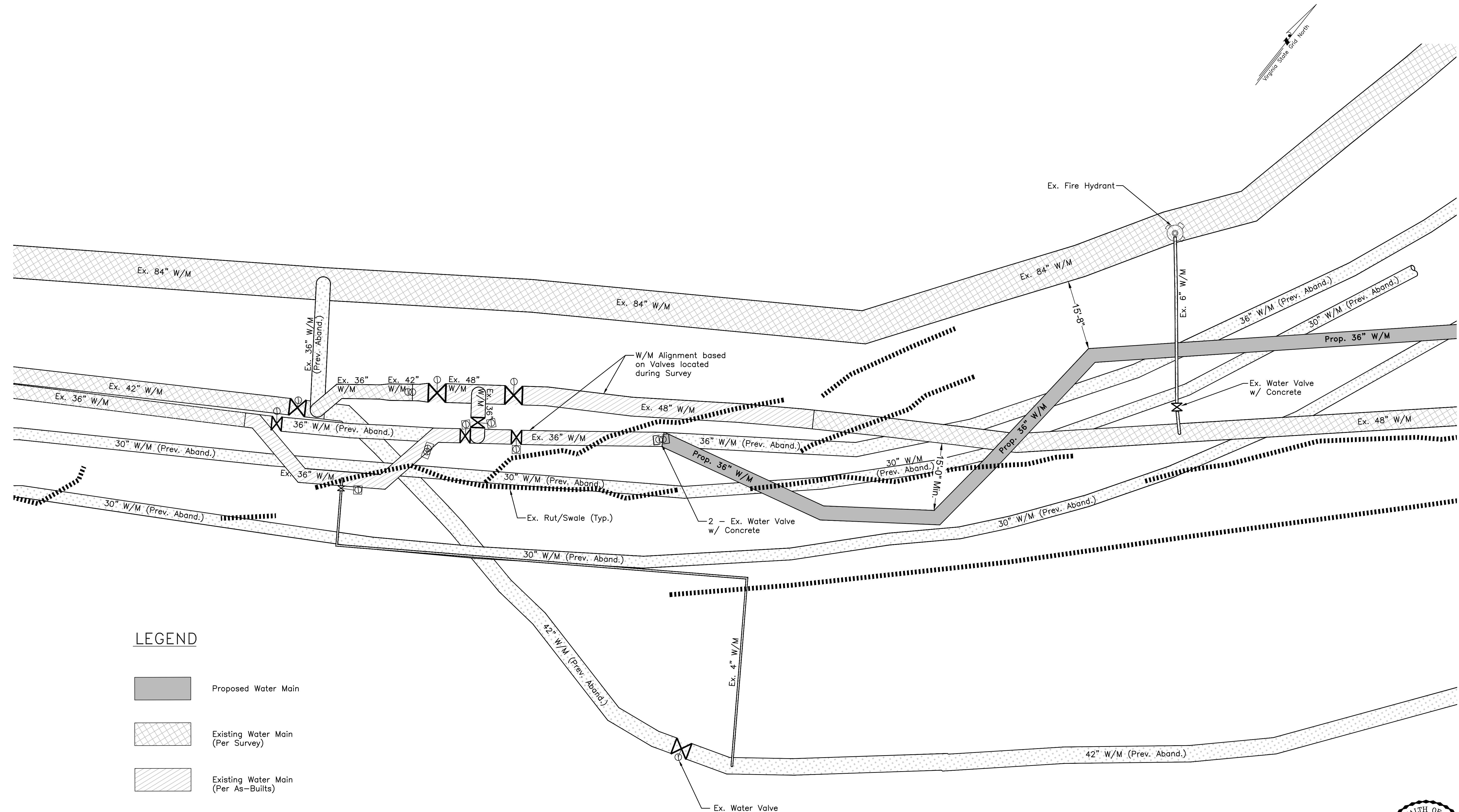
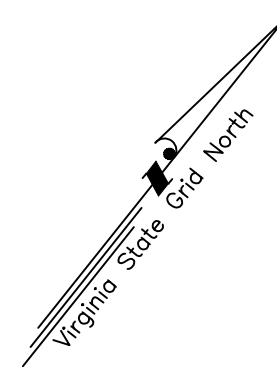
SCALE
 AS NOTED





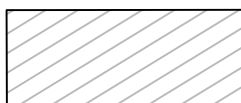



36-INCH PRINCE WILLIAM COUNTY
 TRANSMISSION MAIN, PHASE II
 48" & 36" INTERCONNECTION DETAIL

PROJECT	DIVISION	FEBRUARY 2021
2377	004	SHEET 7
TAX MAP	112-2	Of 10





LEGEND

-  Proposed Water Main
-  Existing Water Main (Per Survey)
-  Existing Water Main (Per As-Built)
-  Previously Abandoned Water Main
-  Valve and Valve Operator
-  Existing Rut/Swale

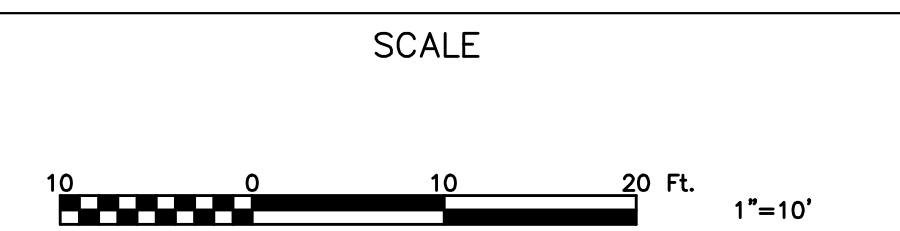
RESTORATION NOTES
SEE SHEET 1



STA. 0+00 TIE-IN BLOW-UP
Scale: 1"=10' Horiz.

FAIRFAX WATER
PLANNING & ENGINEERING
DIVISION

DESIGNED:	PA		
DRAWN:	SRB		
CHECKED:	RSQ		
		NO.	DATE

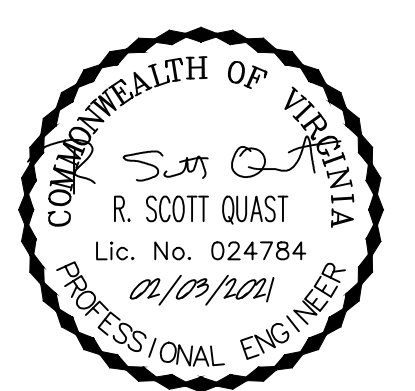
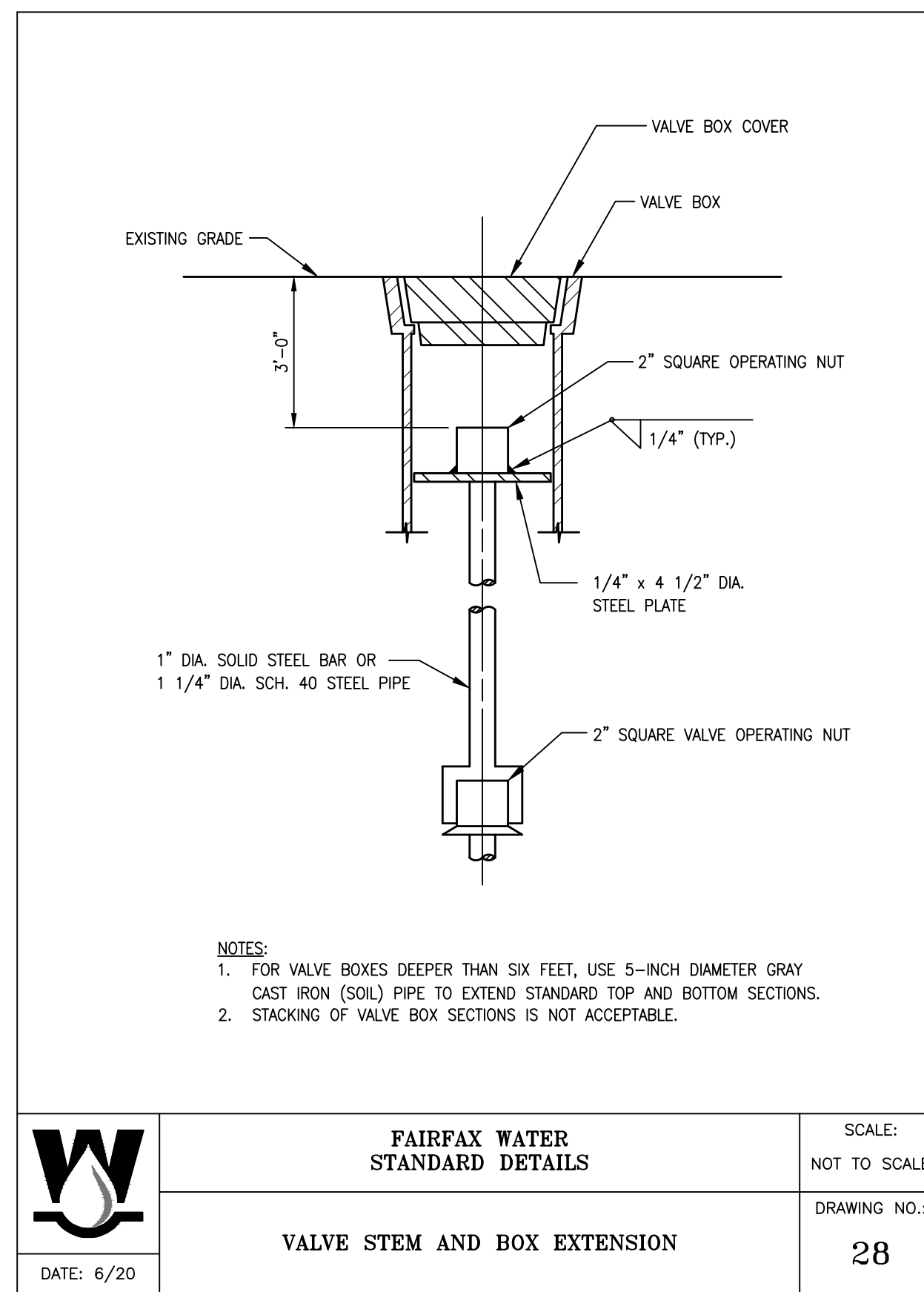
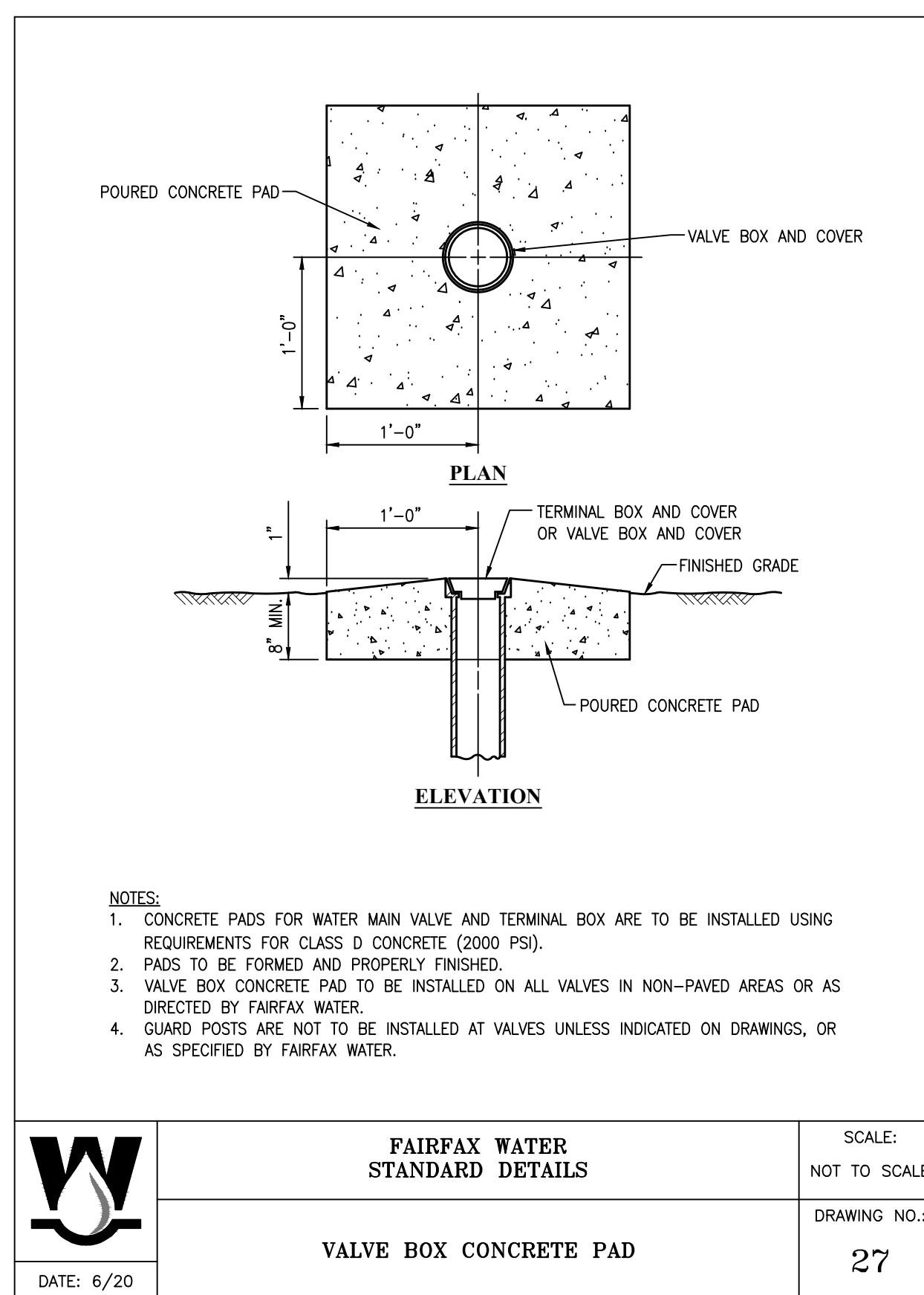
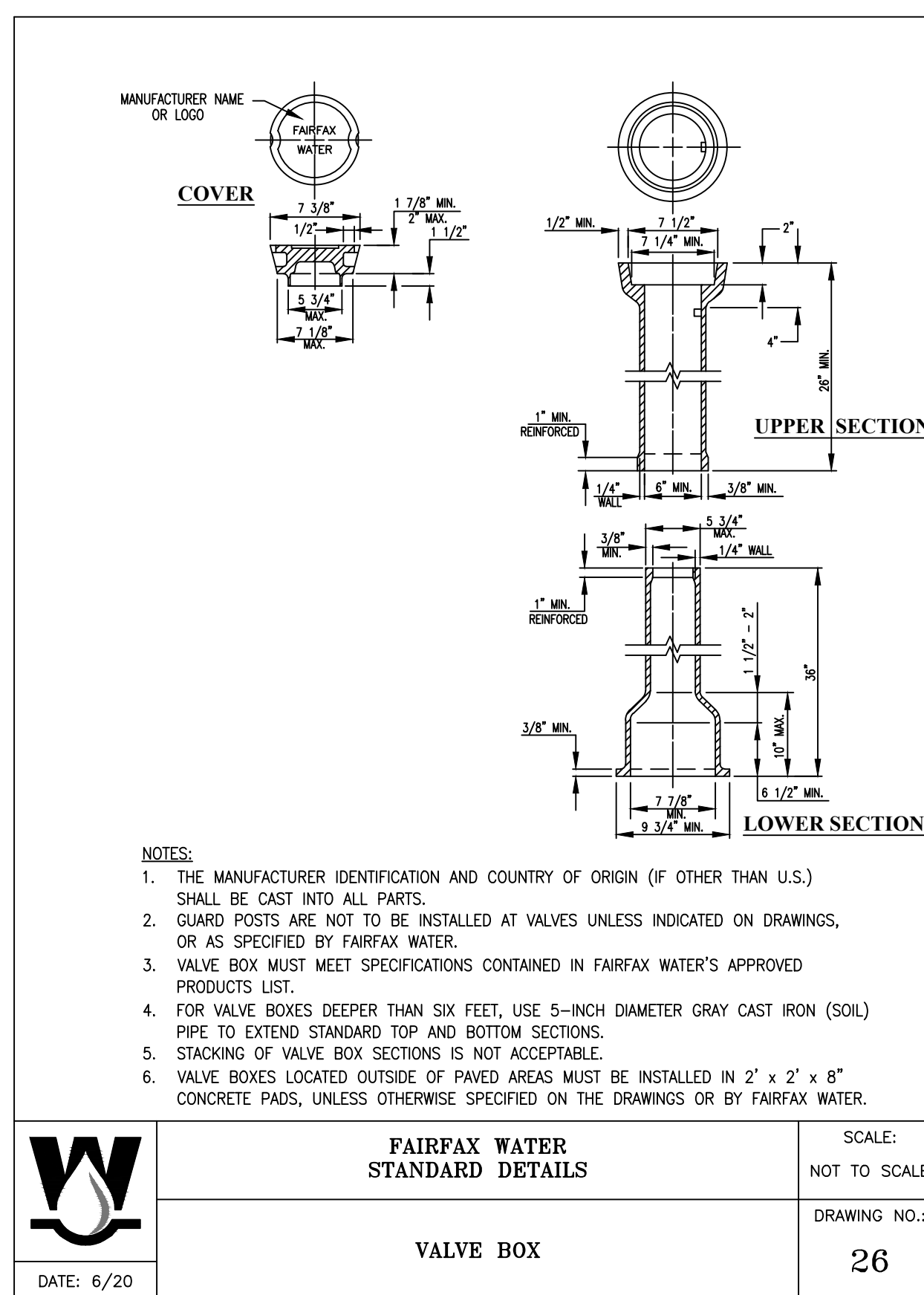
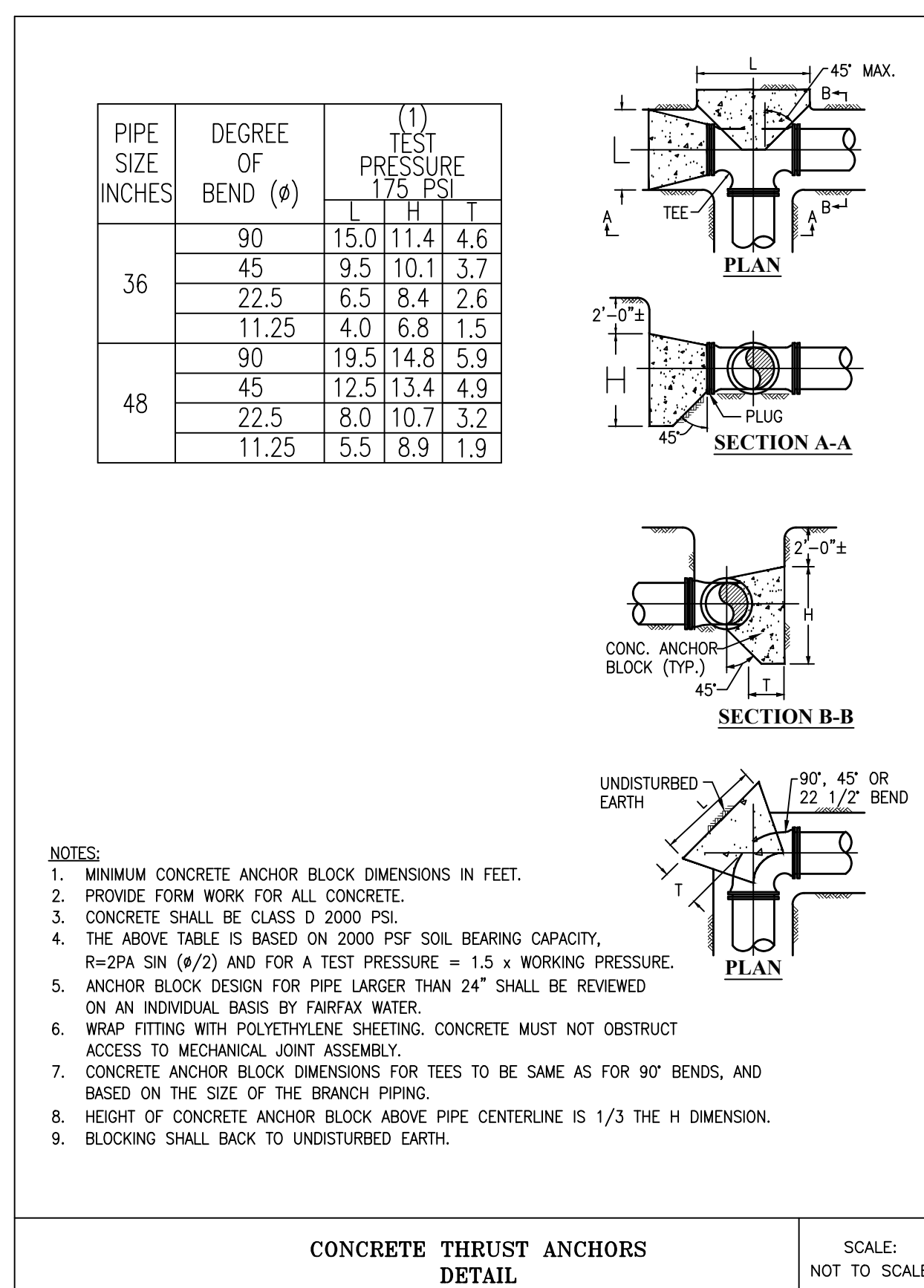
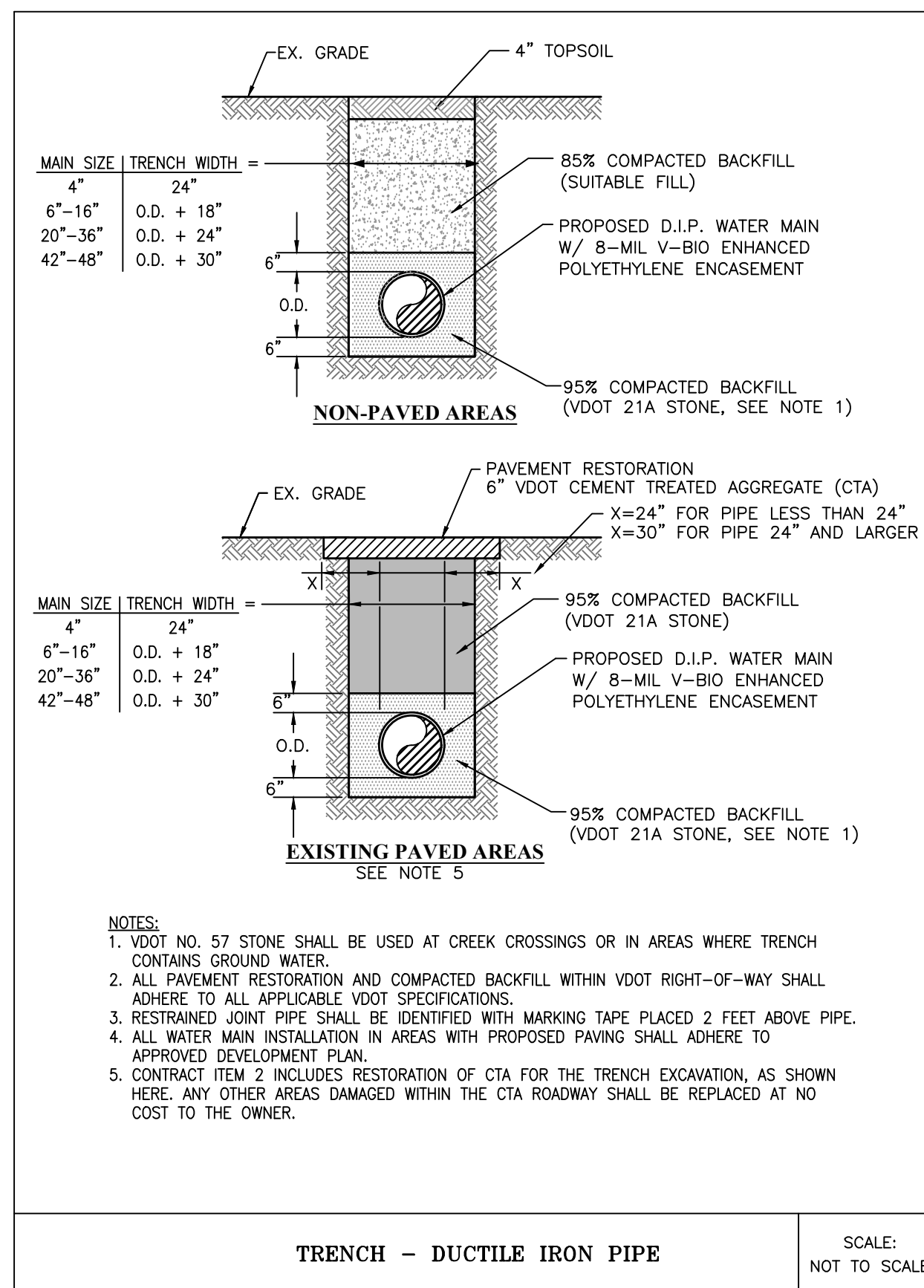


Michael Baker INTERNATIONAL
Michael Baker Intl., Inc.
A Unit of Michael Baker Corporation
10611 Balls Ford Road, Suite 140
Manassas, Virginia 20109
(703) 334-4915
Fax (703) 334-4914

36-INCH PRINCE WILLIAM COUNTY
TRANSMISSION MAIN, PHASE II
STATION 0+00 TIE-IN BLOW-UP DETAIL

PROJECT	DIVISION	FEBRUARY 2021
2377	004	SHEET 8
TAX MAP	112-2	Of 10





FAIRFAX WATER PLANNING & ENGINEERING DESIGN	DESIGNED: PA		
	DRAWN: SRB		
	CHECKED: RSQ		
		NO.	DATE

SCALE NOT TO SCALE

Michael Baker International
 Michael Baker Intl., Inc.
 A Unit of Michael Baker Corporation
 10611 Balls Ford Road, Suite 140
 Manassas, Virginia 20109
 (703) 334-4915
 Fax (703) 334-4914

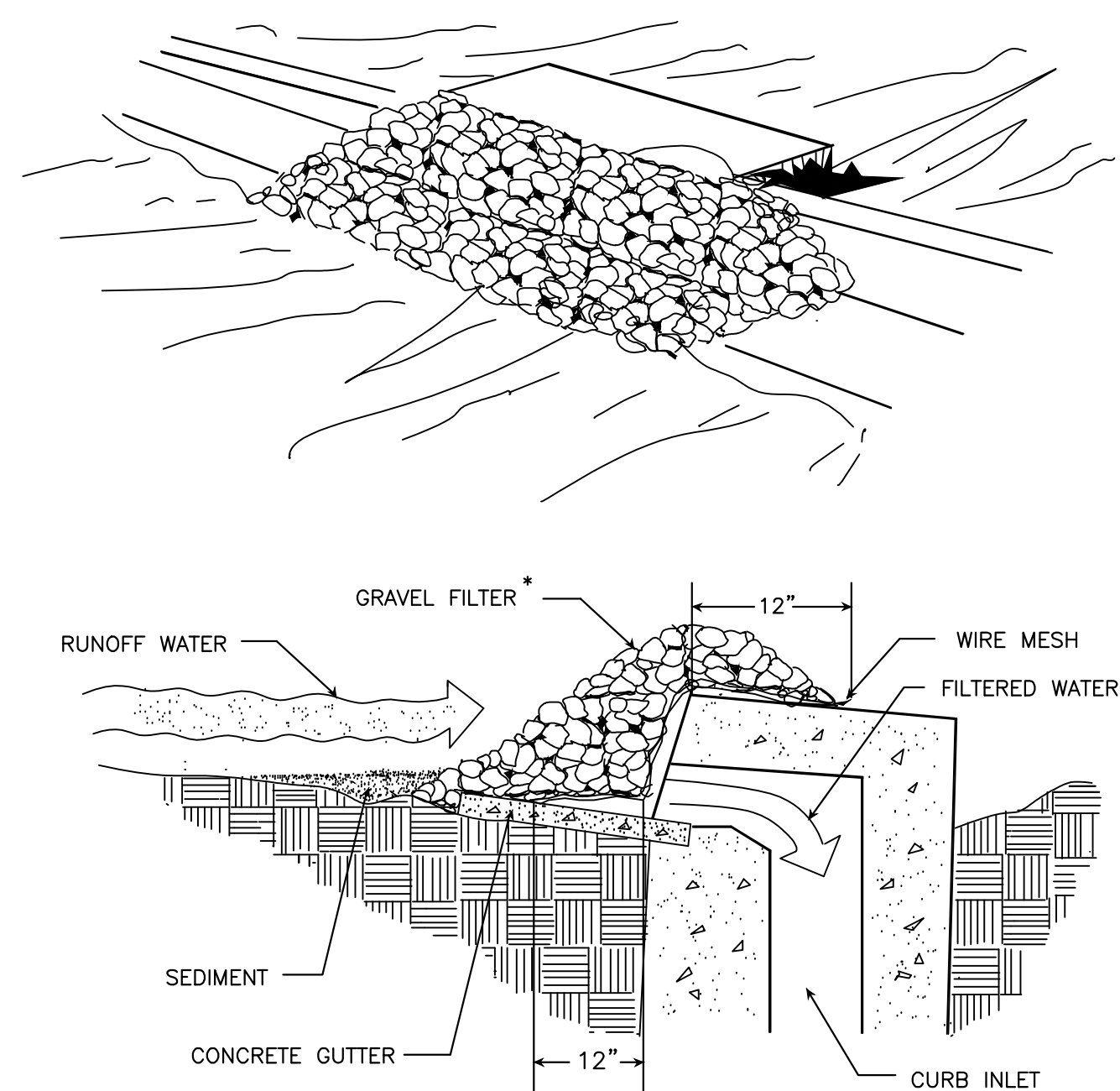
36-INCH PRINCE WILLIAM COUNTY TRANSMISSION MAIN, PHASE II MISCELLANEOUS DETAILS

PROJECT	DIVISION	FEBRUARY 2021
2377	004	SHEET 9
TAX MAP	N/A	Of 10

STANDARD EROSION AND SEDIMENT CONTROL NOTES

- The Contractor shall be required to provide erosion and sediment control measures during all phases of the work. All control measures shall be in accordance with Section 02370 of the Specifications.
- Unless otherwise indicated, all vegetative and structural erosion and sediment control practices shall be constructed and maintained according to minimum Standards and Specifications of the Virginia Erosion and Sediment Control Handbook, latest edition and the Fairfax County Public Facilities Manual, latest edition.
- The Contractor shall apply permanent or temporary soil stabilization to all disturbed areas within 7 days after final grade is reached on any portion of the site. Soil stabilization must also be applied to disturbed areas which may not be at final grade but which will remain undisturbed for longer than 30 days. Soil stabilization measures include vegetative establishment, mulching, and the early application of gravel base material on areas to be paved.
- All erosion and sediment control measures shall be placed prior to or as the first step in construction.
- All erosion and sediment control measures shall be inspected daily by the Site Superintendent or his representative, and after each runoff producing rainfall event. Any necessary repairs to maintain the effectiveness of the erosion control devices and cleanup of sedimentation are the responsibility of the Contractor and shall be made by the close of the working day.
- Sediment shall be removed from paved areas on a daily basis.
- Stock piles of soil and other erodible materials shall be stabilized or protected with sediment trapping measures. The Contractor is responsible for the temporary protection and permanent stabilization for stockpiles onsite as well as for materials transported from the project site. Comply with section 02315 of the Specifications for material containing asbestos.
- The Contractor shall monitor and take precautions to control dust, including (but not limited to) use of water, mulch and control of construction site traffic.
- It is the Contractor's responsibility to clean streets of mud and dust and take whatever measures necessary to insure that the streets are kept in a clean and dust free condition at all times.
- Effluent from dewatering operations shall be filtered or passed through an approved sediment trapping device, or both, and discharged in a manner that does not adversely affect adjacent properties, wetlands, waterways, or the storm drainage system.
- The Contractor is responsible for installation and maintenance of any additional control measures necessary to prevent erosion and sedimentation as determined necessary by the Fairfax Water Inspector.
- Temporary erosion and sediment control measures shall not be removed until all disturbed areas are stabilized. After stabilization is complete, all measures shall be removed within 14 days. Trapped sediment shall be spread and seeded.
- Erosion and sediment controls may only be removed after the areas above them have been stabilized and with the approval of the Fairfax Water Inspector.
- The Contractor is responsible for providing an individual holding a Responsible Land Disturber Certificate per Fairfax County & VDOT requirements, who will be responsible for compliance with carrying out the land disturbing activity on this project.
- Contractor to provide inlet protection/culvert stabilization where shown on the drawings, and elsewhere as needed.

GRAVEL CURB INLET SEDIMENT FILTER



SPECIFIC APPLICATION

THIS METHOD OF INLET PROTECTION IS APPLICABLE AT CURB INLETS WHERE PONDING IN FRONT OF THE STRUCTURE IS NOT LIKELY TO CAUSE INCONVENIENCE OR DAMAGE TO ADJACENT STRUCTURES AND UNPROTECTED AREAS.

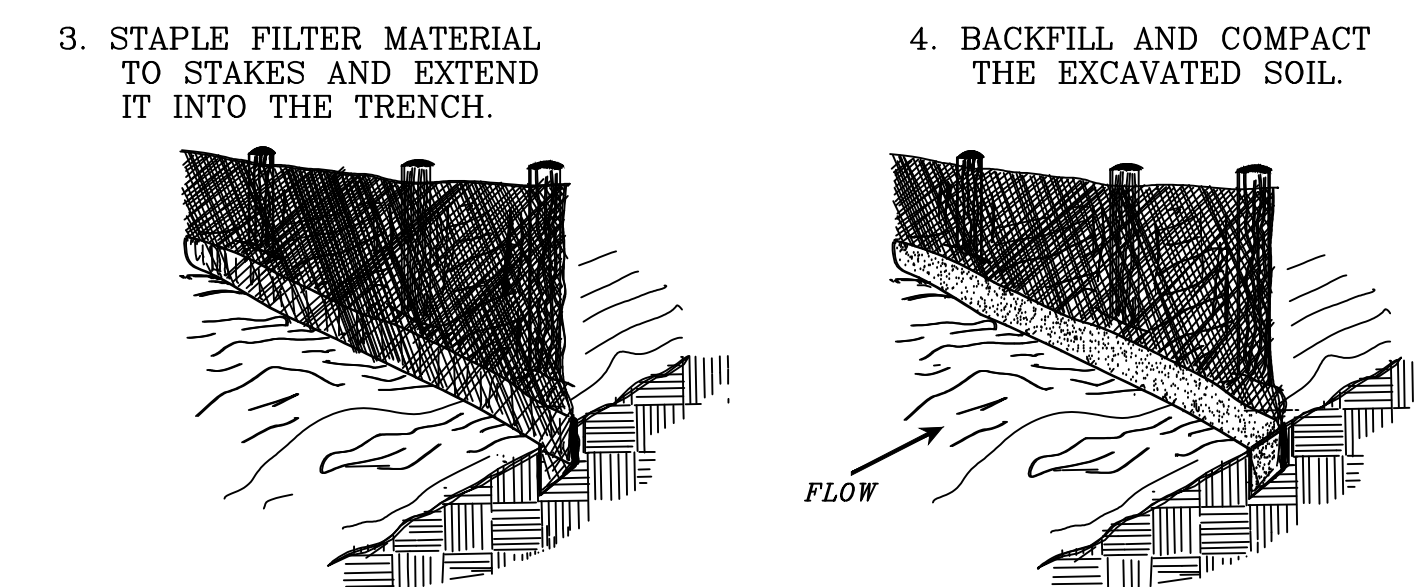
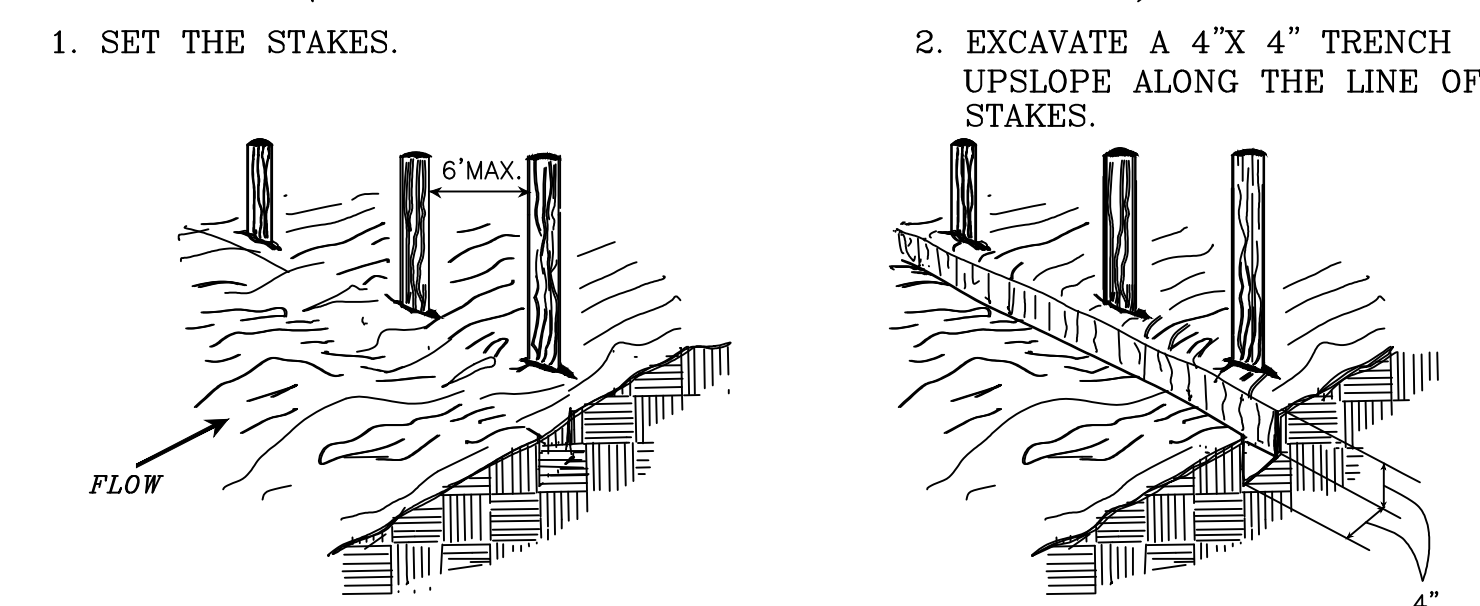
* GRAVEL SHALL BE VDOT #3, #357 OR 5 COARSE AGGREGATE.

SOURCE: VA. DSWC

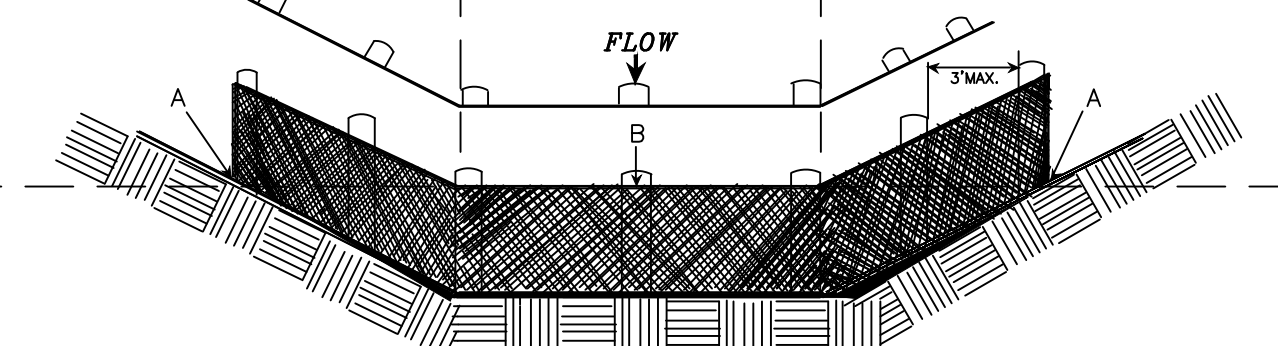
PLATE 3.07-6

IP STORM DRAIN INLET PROTECTION
NOT TO SCALE

CONSTRUCTION OF A SILT FENCE (WITHOUT WIRE SUPPORT)



SHEET FLOW INSTALLATION (PERSPECTIVE VIEW)

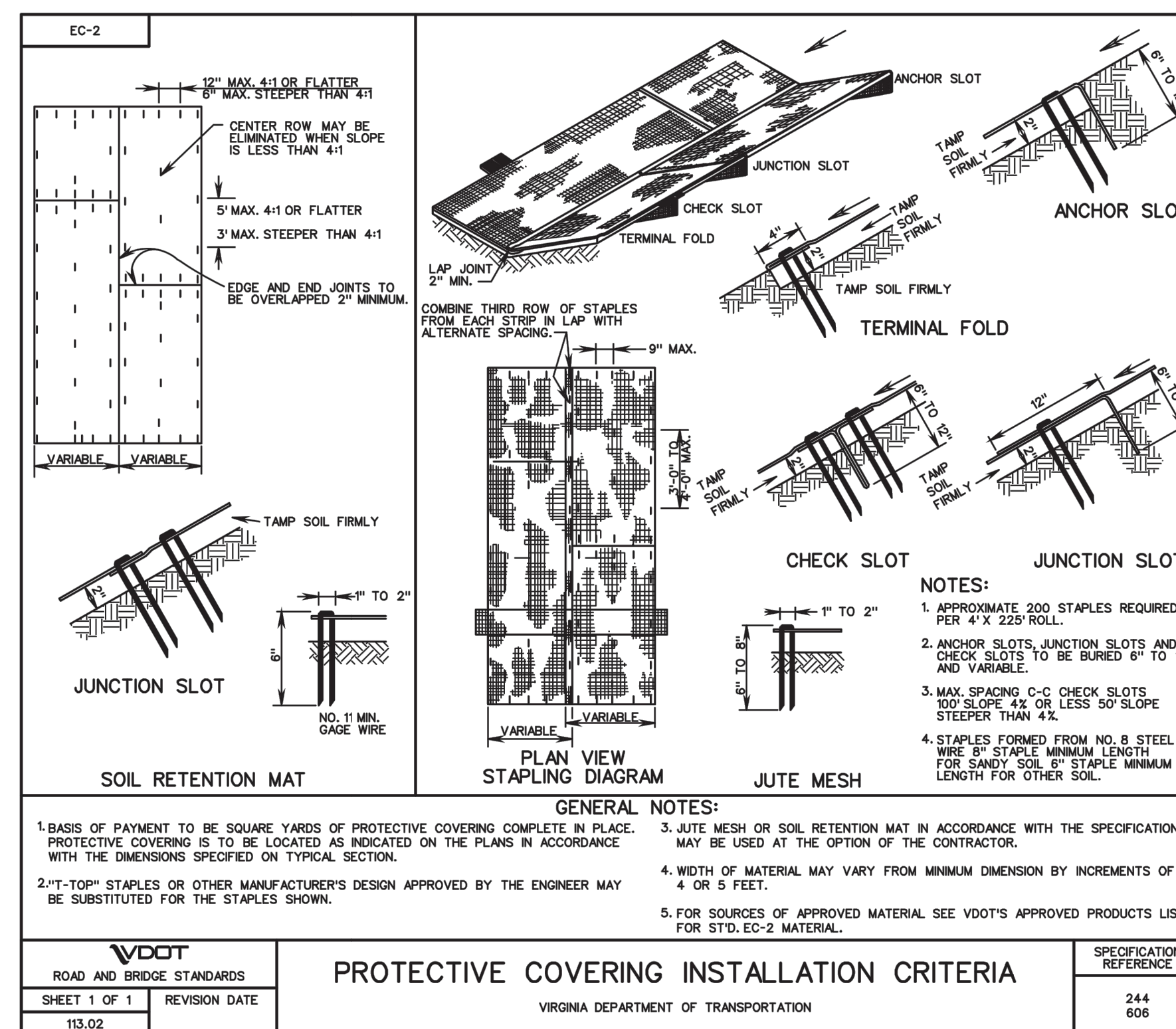


POINTS A SHOULD BE HIGHER THAN POINT B. DRAINAGEWAY INSTALLATION (FRONT ELEVATION)

SOURCE: Adapted from Installation of Straw and Fabric Filter Barriers for Sediment Control, VA. DSWC Sherwood and Wyant

PLATE 3.05-2

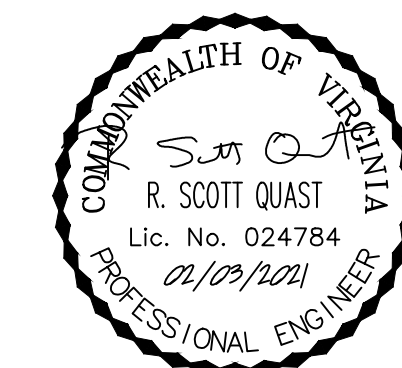
SF TEMPORARY SILT FENCING
NOT TO SCALE



- NOTES:**
- APPROXIMATE 200 STAPLES REQUIRED PER 4' X 225' ROLL.
 - ANCHOR SLOTS, JUNCTION SLOTS AND CHECK SLOTS TO BE BURIED 6" TO 12" AND VARIABLE.
 - MAX. SPACING, C-C CHECK SLOTS 100' SLOPE 4' OR LESS 50' SLOPE STEEPER THAN 4:1.
 - STAPLES FORMED FROM NO. 8 STEEL WIRE 6" STAPLE MINIMUM LENGTH FOR SANDY SOIL 8" STAPLE MINIMUM LENGTH FOR OTHER SOIL.

- GENERAL NOTES:**
- BASIS OF PAYMENT TO BE SQUARE YARDS OF PROTECTIVE COVERING COMPLETE IN PLACE. PROTECTIVE COVERING IS TO BE LOCATED AS INDICATED ON THE PLANS IN ACCORDANCE WITH THE DIMENSIONS SPECIFIED ON TYPICAL SECTION.
 - "T-TOP" STAPLES OR OTHER MANUFACTURER'S DESIGN APPROVED BY THE ENGINEER MAY BE SUBSTITUTED FOR THE STAPLES SHOWN.
 - JUTE MESH OR SOIL RETENTION MAT IN ACCORDANCE WITH THE SPECIFICATIONS MAY BE USED AT THE OPTION OF THE CONTRACTOR.
 - WIDTH OF MATERIAL MAY VARY FROM MINIMUM DIMENSION BY INCREMENTS OF 4" OR 5' FEET.
 - FOR SOURCES OF APPROVED MATERIAL SEE VDOT'S APPROVED PRODUCTS LIST FOR STD. EC-2 MATERIAL.

VDOT ROAD AND BRIDGE STANDARDS		SPECIFICATION REFERENCE	
SHEET 1 OF 1	REVISION DATE	244	606
113.02		PROTECTIVE COVERING INSTALLATION CRITERIA	
VIRGINIA DEPARTMENT OF TRANSPORTATION			



FAIRFAX WATER PLANNING & ENGINEERING DIVISION	DESIGNED: PA			
	DRAWN: SRB			
	CHECKED: RSQ			
		NO.	DATE	

SCALE
NOT TO SCALE

Michael Baker International
Michael Baker Intl., Inc.
A Unit of Michael Baker Corporation
10611 Balls Ford Road, Suite 140
Manassas, Virginia 20109
(703) 334-4915
Fax (703) 334-4914

36-INCH PRINCE WILLIAM COUNTY TRANSMISSION MAIN, PHASE II
EROSION AND SEDIMENT CONTROL NOTES & DETAILS

PROJECT	DIVISION	FEBRUARY 2021
2377	004	SHEET 10
TAX MAP	N/A	Of 10

