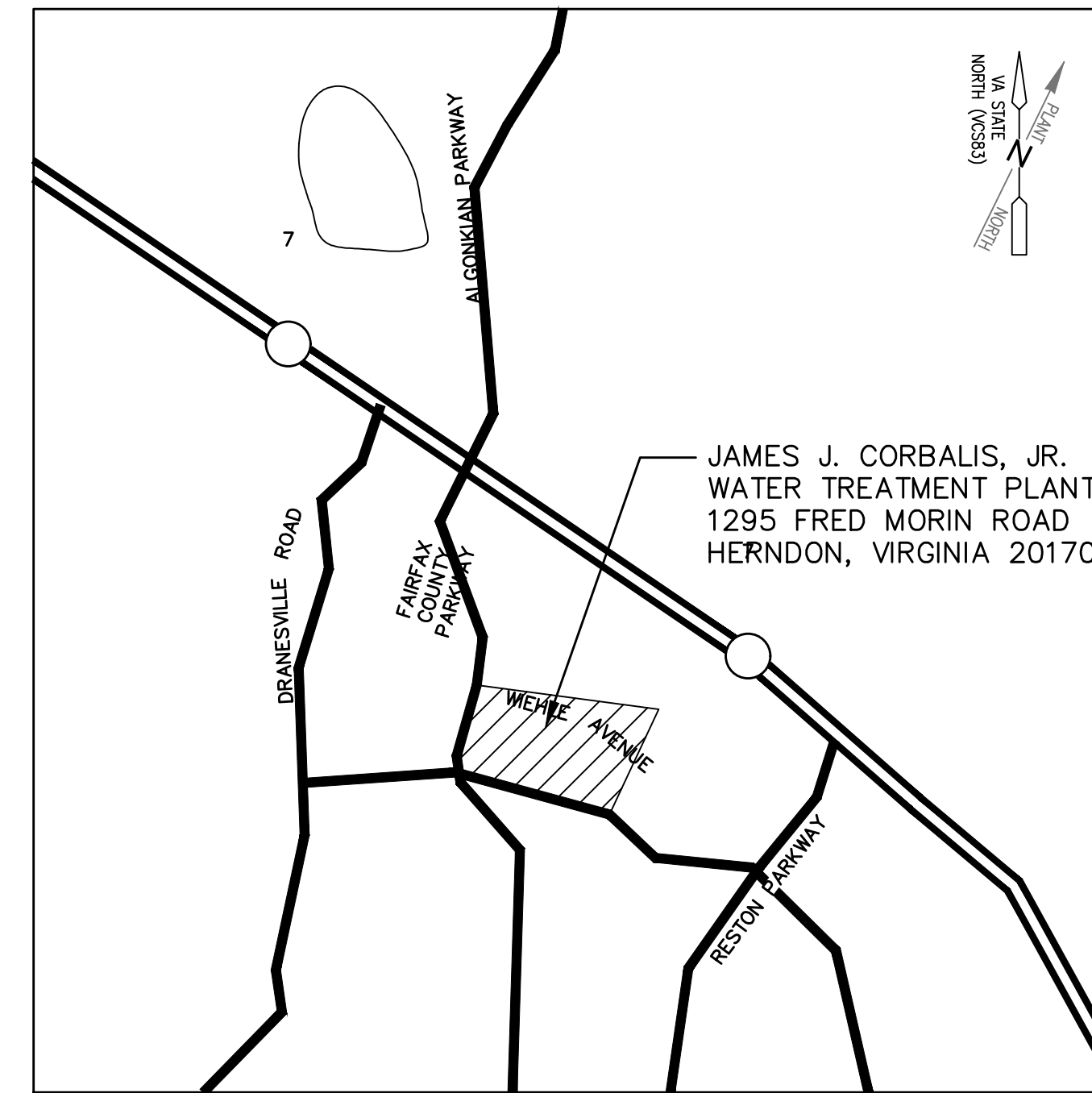
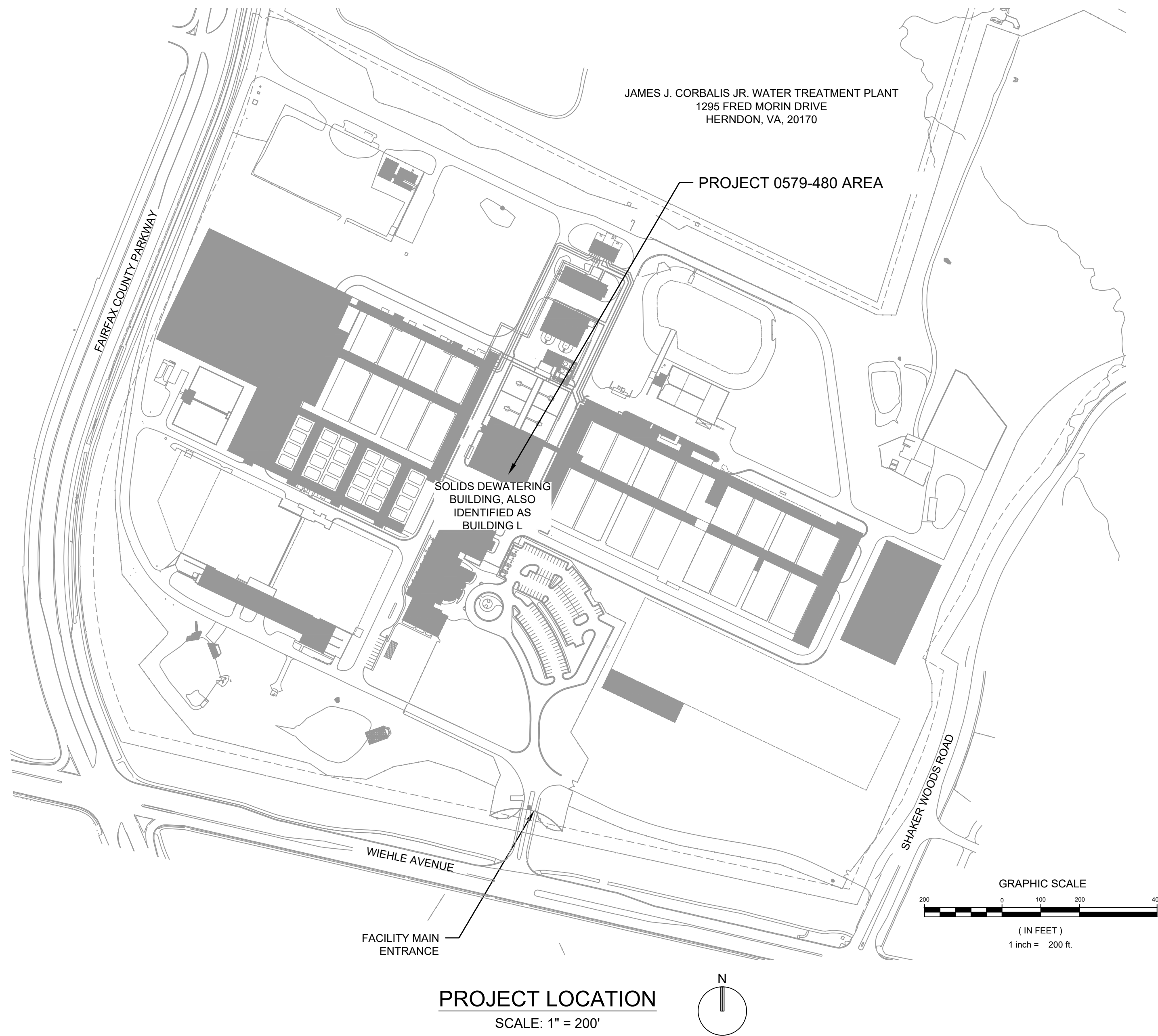


Fairfax Water

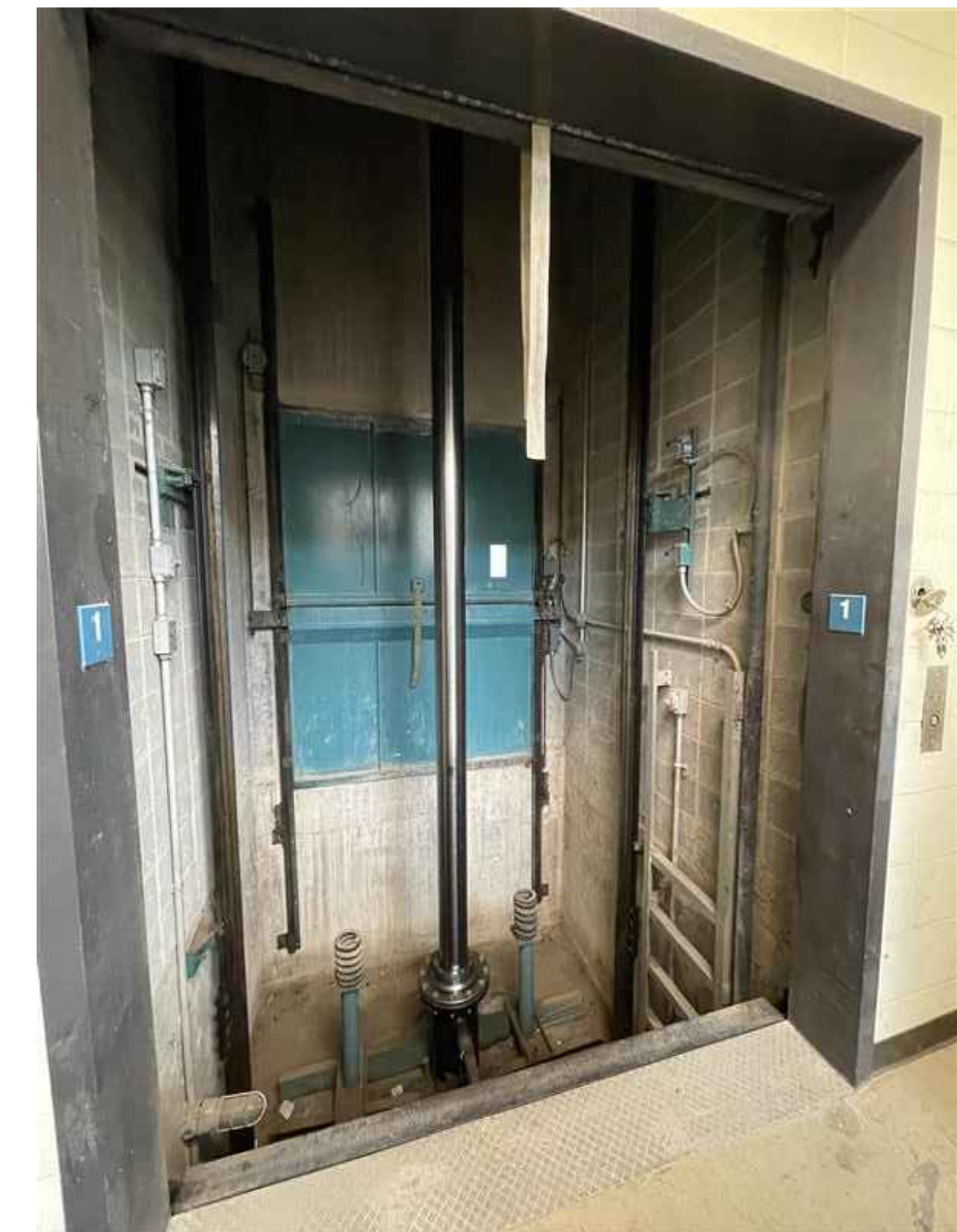
8570 EXECUTIVE PARK AVENUE ~ FAIRFAX ~ VIRGINIA ~ 22031

CORBALIS WATER TREATMENT PLANT SOLIDS BUILDING ELEVATOR MODERNIZATION

FAIRFAX WATER AUTHORITY PROJECT NO. 0579, DIVISION 480
1295 FRED MORIN DRIVE HERNDON, VA 20170



INDEX TO DRAWINGS		
SHT. NO.	DWG. NO.	DESCRIPTION
1	G01	COVER SHEET AND INDEX TO DRAWINGS
2	G02	SITE LAYOUT AND STAGING AREA
3	G03	BUILDING L PARTIAL PLAN EL. 351
4	G04	BUILDING L PARTIAL PLAN EL. 371
5	G05	BUILDING L PARTIAL ROOF PLAN
6	G06	GENERAL NOTES



FAIRFAX WATER
PLANNING & ENGINEERING DIVISION
8560 ARLINGTON BOULEVARD
FAIRFAX, VA 22031

DESIGNED: SS			
DRAWN: IK			
CHECKED: AF			
NO.	DATE	REVISION	

SCALE
AS SHOWN



CORBALIS WATER TREATMENT PLANT
ELEVATOR MODERNIZATION
COVER SHEET AND INDEX TO DRAWINGS

FILE NAME: CTP-A-T01			
PROJECT	DIVISION	DATE: 08-AUG-2024	
0579	480	DRAWING	G01
TAX MAP:	11-1	SHEET	1 of 6



P0579-480
FINAL DESIGN DRAWINGS
AUGUST 2024
1295 FRED MORIN DRIVE
SOLIDS BLDG. ELEVATOR MODERNIZATION

GENERAL NOTES:

- COORDINATE WITH OWNER TO VERIFY ON-SITE PARKING.
- OWNER WILL ASSIGN MINIMUM 20'X20' AREA IN BUILDING L GROUND FLOOR TO GC. CONTRACTOR CANNOT USE, OCCUPY, OR IMPEDE ACCESS TO THE OWNER. EXACT SIZE AND LOCATION TO BE COORDINATED WITH OWNER DURING CONSTRUCTION.

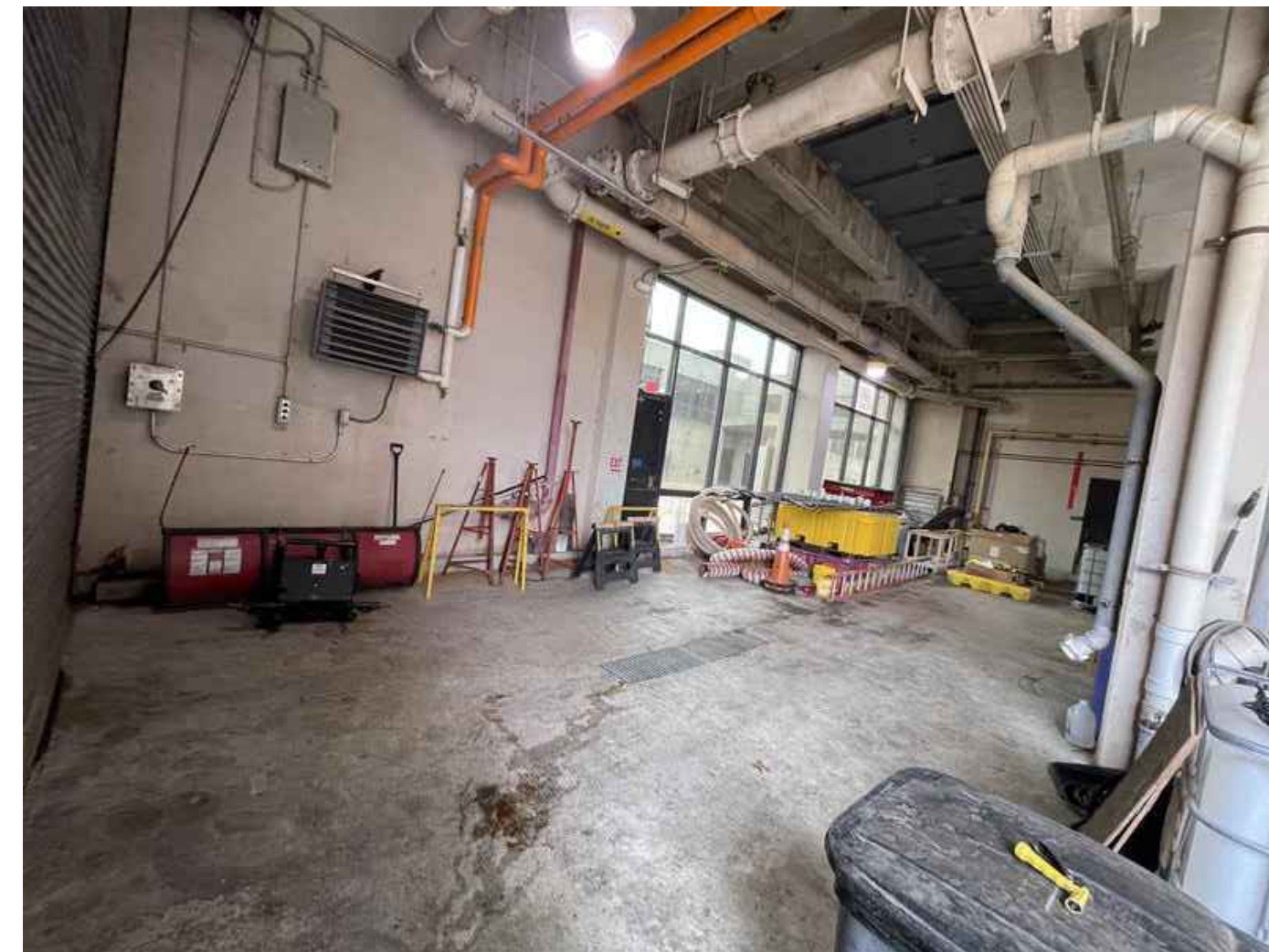
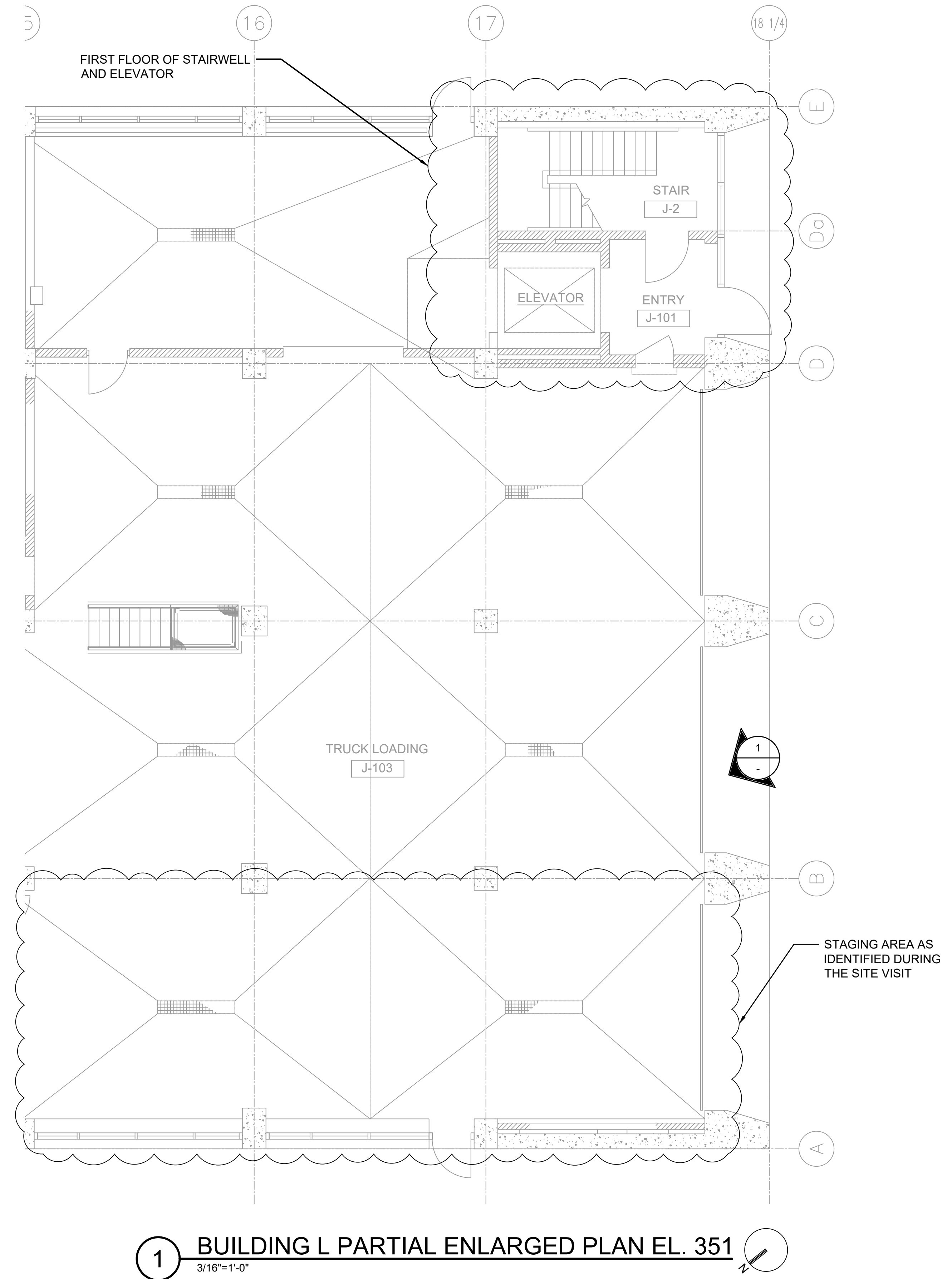
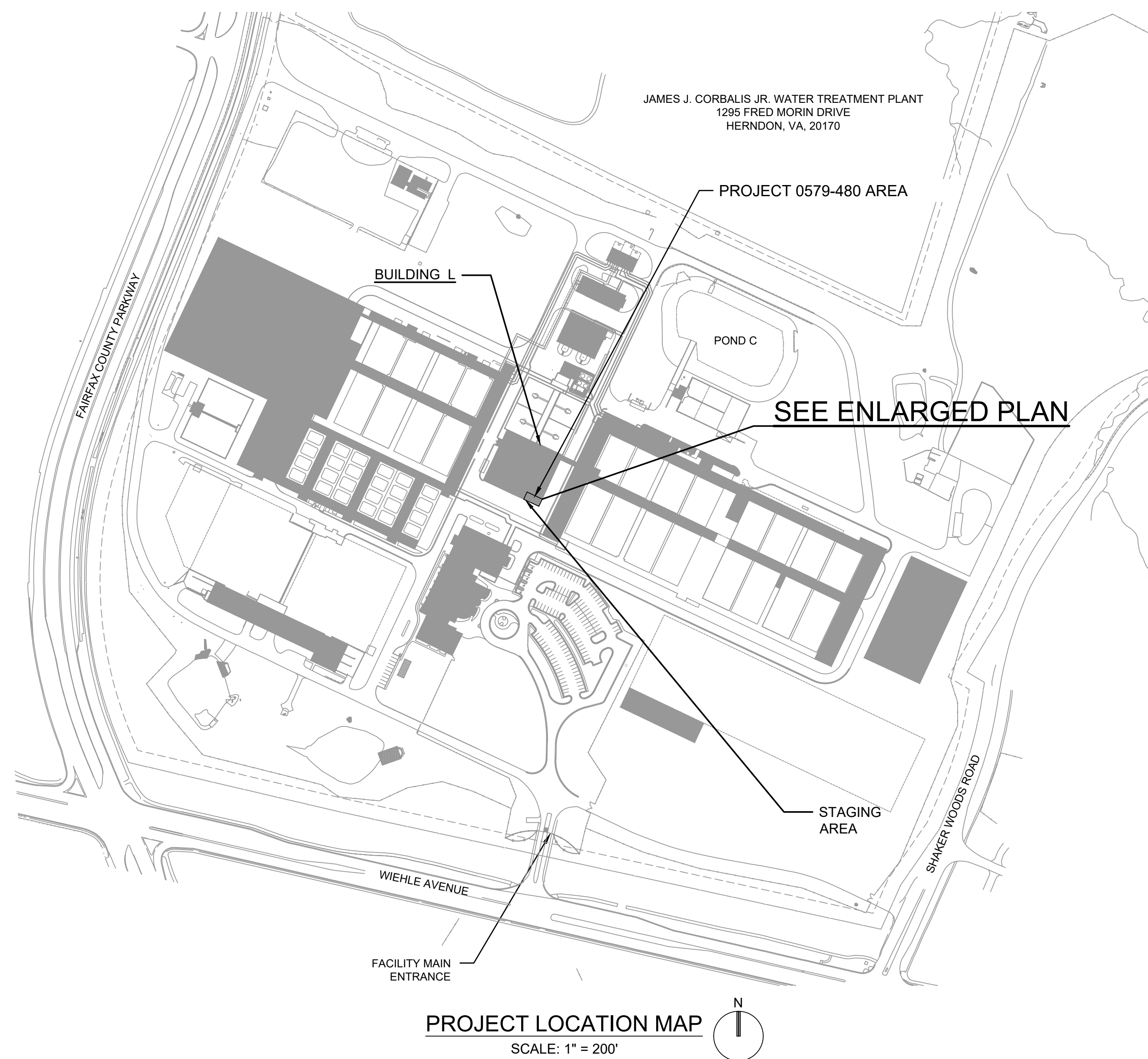
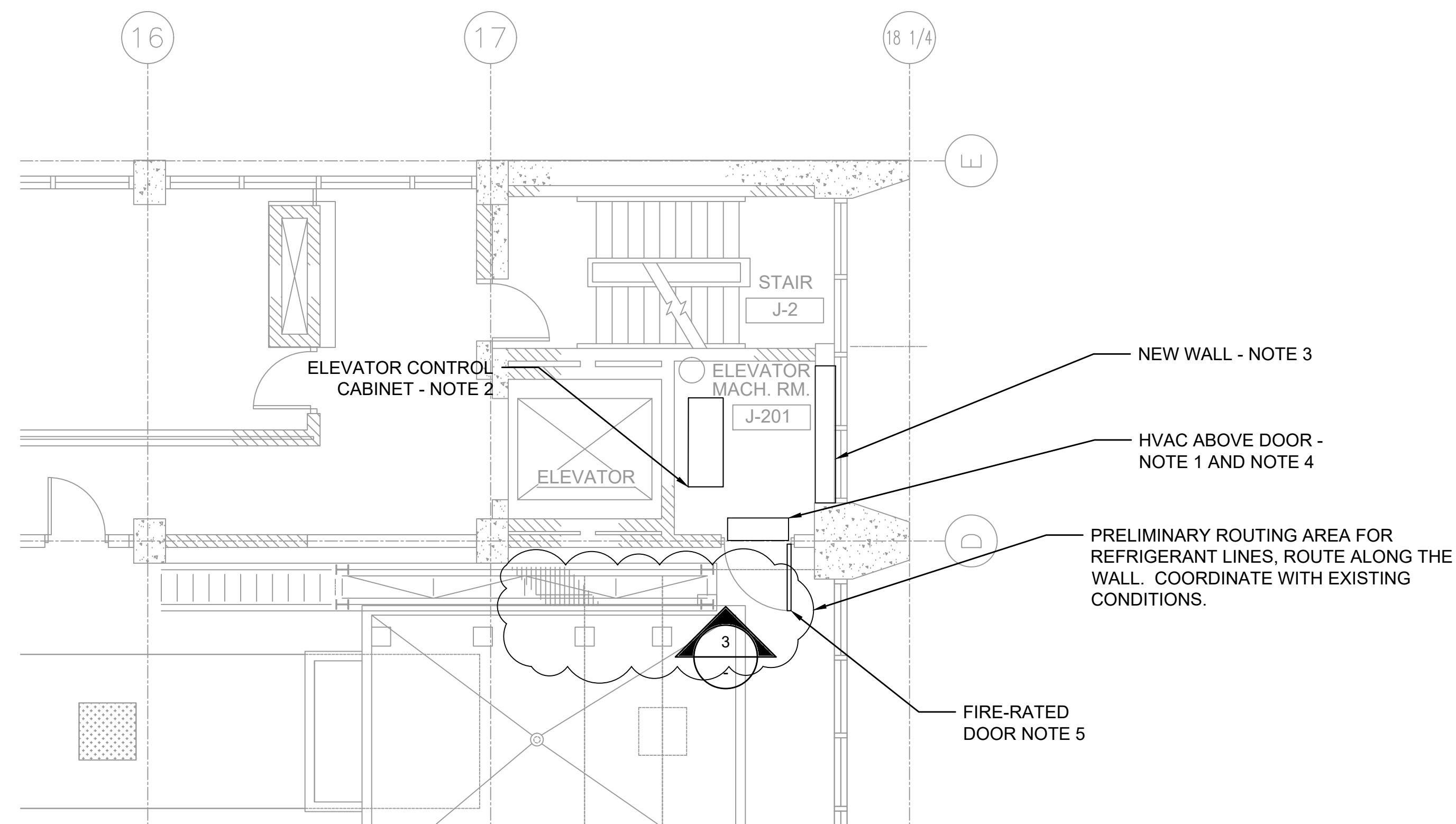


PHOTO 1
N.T.S.



FAIRFAX WATER PLANNING & ENGINEERING DIVISION 8560 ARLINGTON BOULEVARD FAIRFAX, VA 22031	DESIGNED: SS			SCALE	AS SHOWN			CORBALIS WATER TREATMENT PLANT		FILE NAME: CTP-A-T02			
	DRAWN: IK							PROJECT	DIVISION	DATE: 08-AUG-2024	DRAWING	G02	
	CHECKED: AF							0579	480				
		NO.	DATE					REVISION	TAX MAP:	11-1			

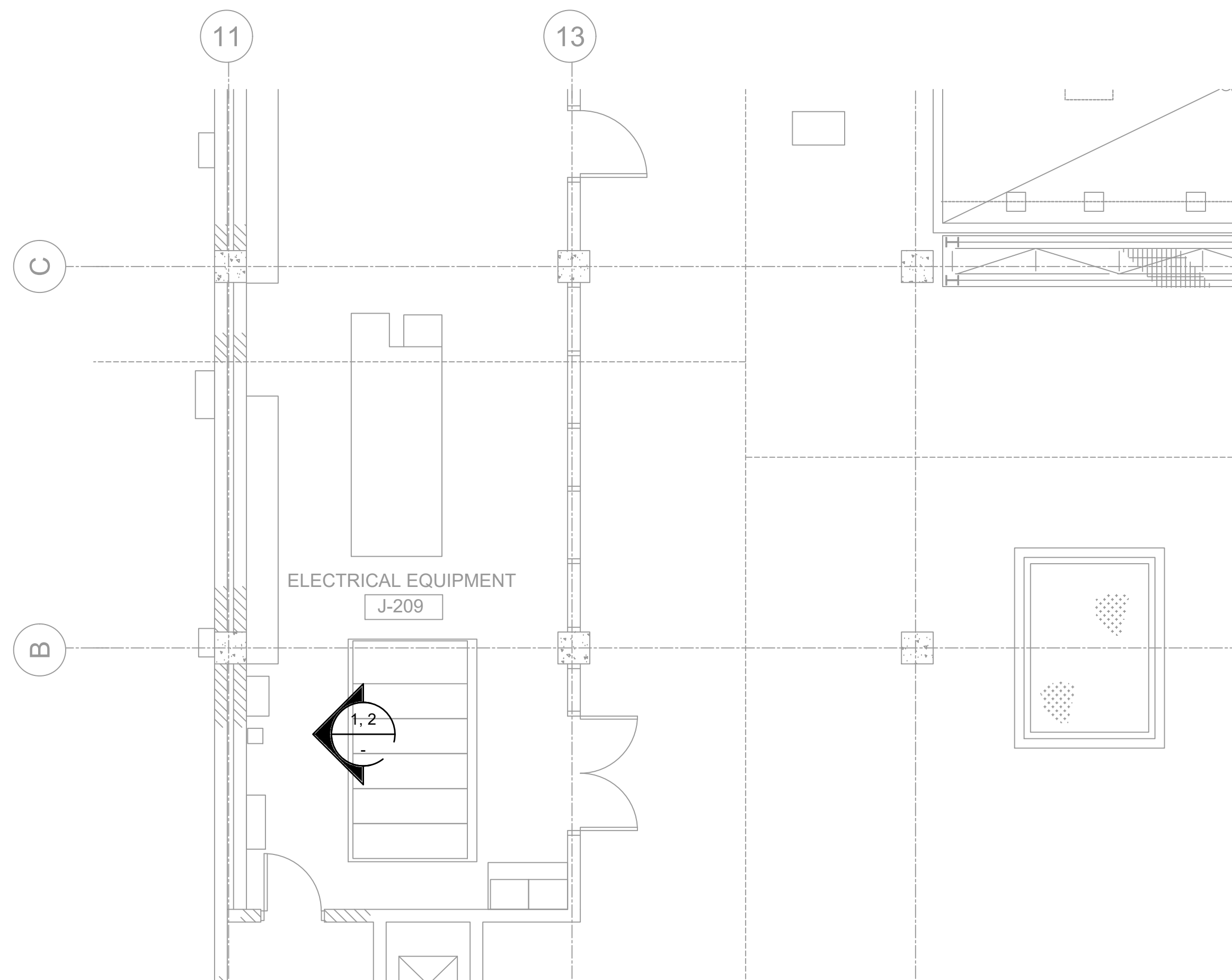


PARTIAL PLAN EL 371
SCALE 3/16" = 1'-0"

PHOTO 1-PANEL LP-J1 SCHEDULE
N.T.S.

SOLIDS BUILDING	
PANEL LP - J1	
Feed from DP-J1	
1	204 205 206 207 Lights
2	12 Lights
3	Passage 202 Lights
4	Emergency Lights Elevator 371
5	209 Stair J1 Lights
6	Exit Lights Elevator 371
7	203 Elevator
8	371 Lights, Press Room
9	103 Lights
10	203 Elevator, Press Room
11	102 Stair J2 Lights
12	201 Elevator Mach Room Lights
13	104 Lights
14	105 Lights
15	106 Lights
16	Pump Rooms 1&2 Elevator 340
17	Exit Lights Thickener Tanks
18	Emergency Lights Elevator 351 & 360
19	Exterior Lights
20	New Gallery Elevator 351
21	302 303 Lights
22	Emergency Lights Elevator 383
23	302 303 Lights
24	Exit Lights Elevator 383
25	1000W Exterior Floors
26	
27	
28	
29	
30	
31	
32	
33	
34	
35	
36	
37	
38	
39	
40	
41	
42	

PHOTO 1-PANEL LP-J1 SCHEDULE
N.T.S.



PARTIAL PLAN EL 371
SCALE 3/16" = 1'-0"

GENERAL NOTES:

- HVAC SIZED IN ACCORDANCE WITH APPLICABLE PERMITTING REQUIREMENTS, SPACE CONDITIONS AND CONTRACTOR'S EQUIPMENT SELECTIONS, INCLUDING BUT NOT LIMITED TO DEFINING AMPERAGE RATING, CIRCUIT BREAKER, SUPPORTS AND ANCHORING. MANUFACTURER: FUJITSU, MITSUBISHI, CARRIER, OR APPROVED EQUAL. THE CONTRACTOR SHALL SUBMIT THE ROOM LAYOUT SHOWING THE CONTROLLER, DISCONNECTS, HVAC EQUIPMENT AND DEVICES FOR ENGINEER AND OWNER REVIEW AND APPROVAL BEFORE STARTING THE INSTALLATION. POWER NEW HVAC UNIT FROM THE PANEL LP-J1 IN ELECTRICAL ROOM AT ELEVATION 371'. CONTRACTOR WILL COORDINATE AND OBTAIN APPROVAL OF ROUTING THROUGH THE SUBMITTAL REVIEW PROCESS.
- USE THE SAME CIRCUIT THAT FEEDS THE EXISTING ELEVATOR CONTROL CABINET ON PANEL DP-J1 TO FEED THE NEW CONTROL CABINET.
- THREE 5/8" METAL STUDS, GYPSUM BOARD, 2 LAYERS WITH RIGID INSULATION IN BETWEEN; SEAL WINDOW TO PREVENT CONDENSATION FROM ENTERING; PROVIDE FILM ADHESIVE ON INSIDE GLASS-COLOR AND PROVIDE PAINTED FINISH ON BOTH SIDES OF THE DRY WALL ASSEMBLY (COLOR SELECTED BY OWNER); PROVIDE A 1" BY 6" GAP BETWEEN TOP OF THE WALL AND BOTTOM OF THE CEILING; PROVIDE A 1" BY 6" GAP BETWEEN BOTTOM OF THE WALL AND FINISHED FLOOR.
- CONTRACTOR SHALL ROUTE THE CONDENSATE TO THE NEAREST AVAILABLE FLOOR DRAIN. ROUTING SHALL NOT CONSTITUTE A TRIP HAZARD. ROUTING TO ELEVATOR HOISTWAY PIT IS NOT PERMITTED.
- FIRE RATED DOOR REPLACEMENT TO MATCH EXISTING FRAME OPENING AND FINISH. MANUFACTURERS: CURRIES MANUFACTURING, THE CECO CORP, MESKER INDUSTRIES, OR APPROVED EQUAL



PHOTO 3 - VIEW OF EXISTING ELEVATOR CONTROLLER
N.T.S.

FAIRFAX WATER
PLANNING & ENGINEERING DIVISION
8560 ARLINGTON BOULEVARD
FAIRFAX, VA 22031

DESIGNED: SS
DRAWN: IK
CHECKED: AF

NO.	DATE	REVISION

SCALE

AS SHOWN



CORBALIS WATER TREATMENT PLANT

ELEVATOR MODERNIZATION
BUILDING L PARTIAL PLAN EL 371

FILE NAME: CTP-A-T04

PROJECT DIVISION DATE: 08-AUG-2024

0579 480 DRAWING G04

TAX MAP: 11-1 SHEET 4 of 6

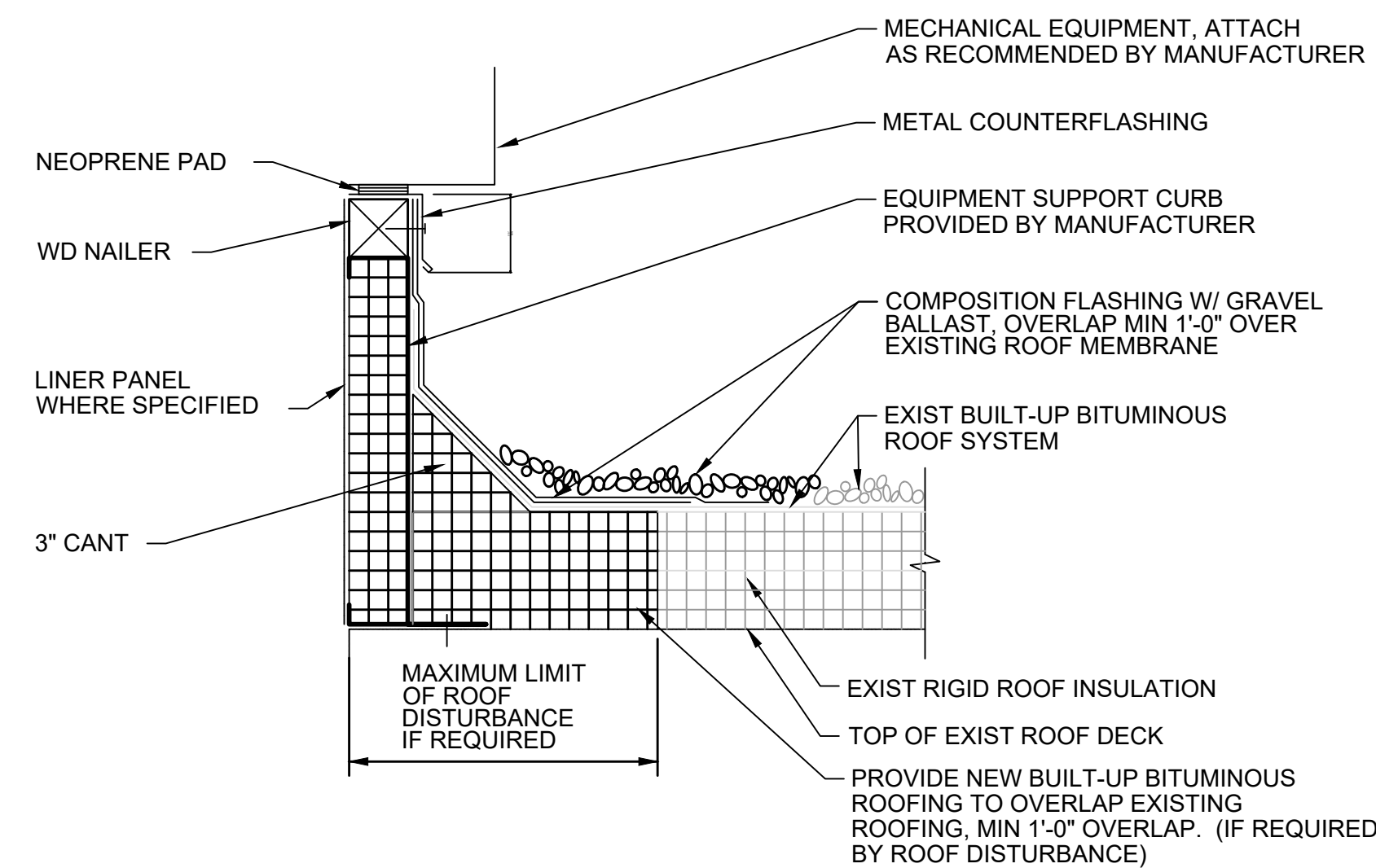
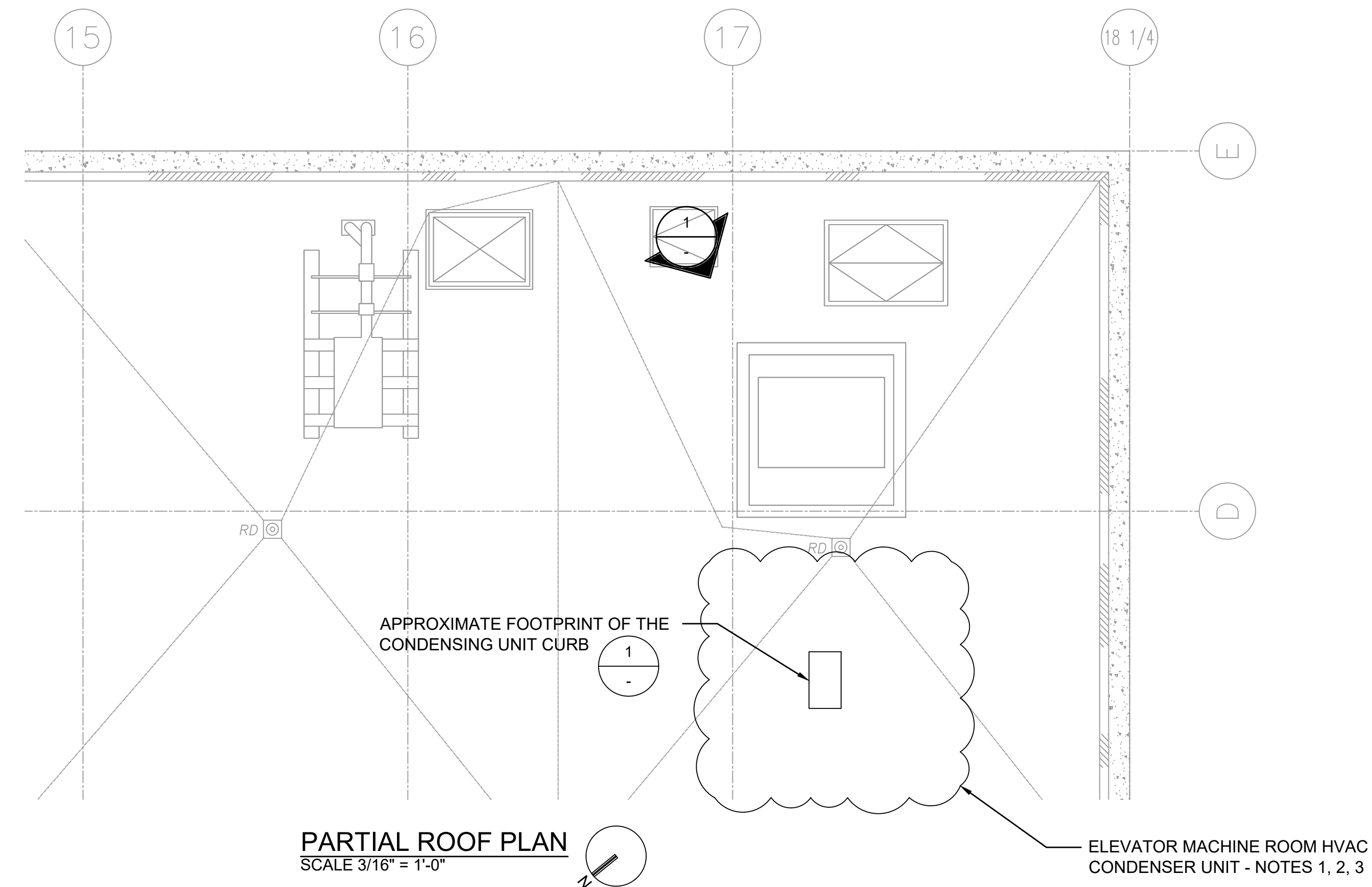


GENERAL NOTES:

1. PROVIDE 250VAC, 30A, NEMA 4X SS DISCONNECT SWITCH TO POWER NEW HVAC UNIT FROM THE PANEL LP-J1 IN ELECTRICAL ROOM AT ELEVATION 371'.
2. MOUNT EQUIPMENT ON PREFABRICATED GALVANIZED STEEL FRAME TO SUIT SUPPORTED EQUIPMENT LOADS, AND TOP OF THE CURB SHALL BE MINIMUM 8-INCH ABOVE THE TOP OF THE ROOF SURFACE WITH COUNTERFLASHING, FACTORY INSTALLED INSULATION AND TREATED WOOD NAILER; MANUFACTURERS AND PRODUCTS: PATE CO., THYCURB OR RPS CORP.
3. PROVIDE NEW SEALED PENETRATIONS THROUGH ROOF ASSEMBLY, SEAL, PATCH AND REPAIR TO MATCH EXISTING ROOF CONSTRUCTION.
4. TEST ROOF INTEGRITY BEFORE INSTALLING THE GRAVEL PER ROOFING FLASHING MEMBRANE MANUFACTURER GUIDELINES. IF FREE WATER OR HARMFUL FOREIGN MATERIAL IS PRESENT, REMOVE AFFECTED AREA UP TO THE LIMIT OF DISTURBANCE AND REBUILD ROOF IN CLEAN, DRY CONDITIONS.
5. EQUIPMENT CURB SHALL BE INSTALLED NO LESS THAN 10 FEET FROM THE INSIDE FACE OF THE PARAPET WALL AND MINIMUM OF 3 FEET FROM THE CLOSEST ROOF DRAIN.



PHOTO 1 - PARTIAL VIEW OF ROOF
N.T.S.



1 MECHANICAL EQUIPMENT SUPPORT CURB
N.T.S.

FAIRFAX WATER
PLANNING & ENGINEERING DIVISION
8560 ARLINGTON BOULEVARD
FAIRFAX, VA 22031

DESIGNED: SS
DRAWN: IK
CHECKED: AF

NO.	DATE	REVISION
-	-	--
-	-	--
-	-	--
-	-	--
-	-	--
-	-	--
-	-	--
-	-	--
-	-	--

SCALE

AS SHOWN

Jacobs

Fairfax Water

CORBALIS WATER TREATMENT PLANT

ELEVATOR MODERNIZATION
BUILDING L PARTIAL ROOF PLAN

FILE NAME: CTP-A-T05

PROJECT DIVISION DATE: 08-AUG-2024

0579 480 G05

TAX MAP: 11-1 SHEET

5 of 6



GENERAL NOTES:

ELECTRICAL
 CONTRACTOR IS RESPONSIBLE FOR SIZING, INCLUDING BUT NOT LIMITED TO WIRES, CONDUITS, BREAKERS, AND PROVIDING CONDUITS AND EQUIPMENT (BATTERY, LIGHTING FIXTURES, DISCONNECTS AND ANCILLARY EQUIPMENT), INCLUDING BUT NOT LIMITED TO CONDUIT SUPPORTS, DOWSTREAM OF THE FEEDER PANEL DESIGNATED ON THE DRAWINGS.

CONDUIT
 FOR EACH TYPE OF CONDUIT USE UL LISTED THREADED HUBS AND THE ASSOCIATED THREADED FITTINGS AND SUPPORTS AS LISTED BELOW. WHERE A TRANSITION BETWEEN TWO DIFFERENT TYPES OF CONDUITS IS NEEDED, USE UL LISTED THREADED FITTINGS, AND CONSIDER CORROSIVE PROTECTION WHERE DISSIMILAR METALS MAY GET IN CONTACT.

- G02, FIRST FLOOR OF STAIRWELL: RIGID GALVANIZED STEEL (RGS) AND STAINLESS STEEL (SS) ENCLOSURE FOR DISCONNECT
- G02, FIRST FLOOR ELEVATOR PIT: RGS OR PVC COATED RGS MATCHING EXISTING CONDUIT INSTALLATION, AND LIQUIDTIGHT FLEXIBLE METAL CONDUIT (LMFC).
- G04, ELEVATION 371 (SECOND FLOOR), ELECTRICAL ROOM: RGS
- G04, ELEVATION 371 (SECOND FLOOR), BELT-PRESS ROOM: PVC COATED RGS.
- G04, ELEVATION 371 (SECOND FLOOR), ELEVATOR CONTROL ROOM: ALUMINUM RIGID METAL CONDUIT (AL RMC)
- G05, ROOF: PVC COATED RGS AND LFMC; SS ENCLOSURE FOR DISCONNECT; NON-CORROSIVE OR SS STRUT AND ACCESSORIES; USE BREADED BARE CABLE RATED FOR LIGHTNING PROTECTION TO BOND THE OUTDOOR UNIT TO THE EXISTING LIGHTNING SYSTEM ON THE ROOF (SEE THE ATTACHED AS EXAMPLE).

COATINGS

ALL COATINGS SHALL BE APPLIED IN ACCORDANCE TO THE PRODUCT MANUFACTURER'S SPECIFICATIONS.

ACCEPTABLE COATING MANUFACTURER AND PRODUCTS FOR THE APPLICATIONS BELOW SHALL BE AS FOLLOWS, OR EQUAL ALLOWED IN WRITING BY OWNER.

CONCRETE/CMU WALLS/CEILINGS:

PRIMER - SHERWIN WILLIAMS LOXON CONCRETE AND MASONRY PRIMER – SEALER - LX02W0050; 1 COAT 2.1-3.2 TOTAL MILS DFT; COLOR - WHITE
 INTERMEDIATE AND TOPCOAT - SHERWIN WILLIAMS SUPERPAINT SEMI-GLOSS - A88W01251; 2 COATS; COLOR - EXTRA WHITE (SW7006)

CONCRETE FLOORS:

PRIMER - SHERWIN WILLIAMS ARMORSEAL 33 - KB58CQ033-35; 1 COAT 7.0-9.0 TOTAL MILS DFT; COLOR - CLEAR INTERMEDIATE AND TOPCOAT - SHERWIN WILLIAMS ARMORSEAL HS 1000 GLOSS - B67W02001-16; 1-2 COATS 5.0-10.00 TOTAL MILS DFT; COLOR - SLATE GRAY (SW4026)

DRYWALL:

PRIMER - SHERWIN WILLIAMS MULTI-PURPOSE INTERIOR-EXTERIOR PRIMER-SEALER - B51W00450; COAT TO COVER; COLOR - WHITE
 INTERMEDIATE AND TOPCOAT - SHERWIN WILLIAMS SUPERPAINT SEMI-GLOSS - A88W01251; 2 COATS; COLOR - EXTRA WHITE (SW7006)

STEEL - NON-WETTED SURFACES:

PRIMER - SHERWIN WILLIAMS PRO INDUSTRIAL PRO-CRYL UNIVERSAL PRIMER - B66W01310-16; 1 COAT 1.9-3.8 TOTAL MILS DFT; COLOR - GRAY
 INTERMEDIATE AND TOPCOAT - SHERWIN WILLIAMS PRO INDUSTRIAL ACROLON 100 WATERBASED URETHANE HIGH GLOSS - I65T00724-VJ ; 2 COATS 3.6-7.0 TOTAL MILS DFT; COLOR - FAIRFAX WATER DARK BRONZE

GALVANIZED METAL:

PRIMER - SHERWIN WILLIAMS PRO INDUSTRIAL DTM WASH PRIMER – B71Y00001; 1 COAT .7-1.4 TOTAL MILS DFT; COLOR - YELLOW/GREEN
 INTERMEDIATE AND TOPCOAT - SHERWIN WILLIAMS PRO INDUSTRIAL ACROLON 100 WATERBASED URETHANE HIGH GLOSS - I65T00724-VJ; 2 COATS 3.6-7.0 TOTAL MILS DFT; COLOR – TBD BY FAIRFAX WATER

P0579-480

FINAL DESIGN DRAWINGS

AUGUST 2024

1295 FRED MORIN DRIVE SOLIDS BLDG. ELEVATOR MODERNIZATION

FAIRFAX WATER PLANNING & ENGINEERING DIVISION 8560 ARLINGTON BOULEVARD FAIRFAX, VA 22031	DESIGNED: SS	-	-	--	SCALE	AS SHOWN	 	CORBALIS WATER TREATMENT PLANT		FILE NAME: CTP-A-T06		
	DRAWN: IK	-	-	--				PROJECT	DIVISION	DATE: 08-AUG-2024	DRAWING G06	
	CHECKED: AF	-	-	--				0579	480	G06		
		-	-	--				TAX MAP:	11-1	SHEET 6 of 6		
		NO.	DATE	REVISION								